

DISCOVER

PC

SAVE TIME & MONEY

FINISH
COLLEGE
FASTER,

AND BE ON YOUR WAY
TO THE CAREER YOU WANT

COMING THIS FALL
TO SUPPORT
STUDENT SUCCESS:

FOOD PANTRY
CAREER PATHWAYS CENTER
VETERANS CENTER

GETTING YOU WHERE YOU NEED TO

GO

It's faster and easier than ever before with our Areas of Study pathways. Receive support from application to graduation with a community of faculty and students who share your interests, and save time and money in the process.

Learn more on pages 10 & 11



Arts &
Communications



Business &
Management



Healthcare



Information
Technology



Math & Science



Skilled Trades



Social Sciences
& Education

pencol.edu/discoverpc

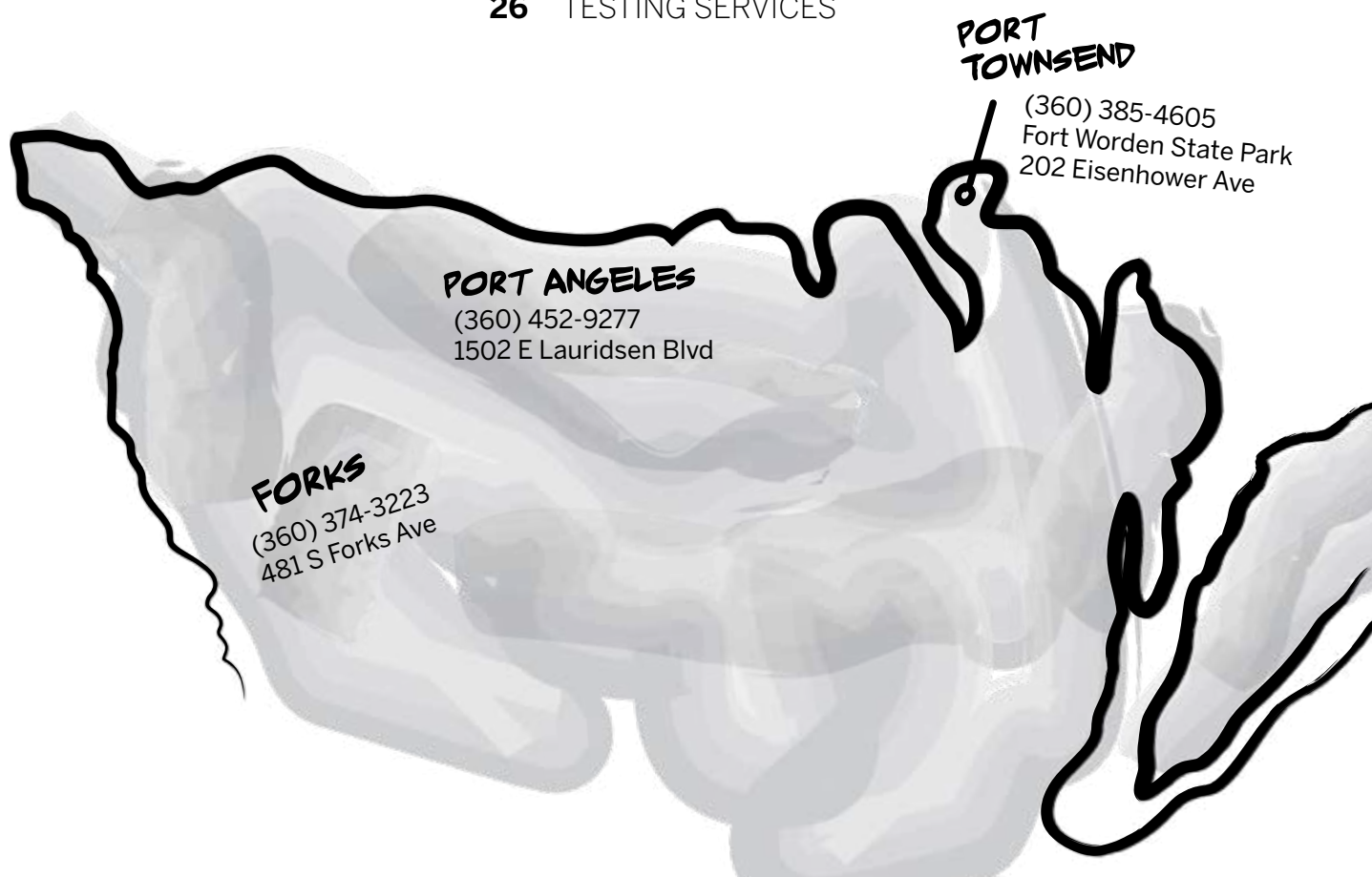
Table of Contents



COVER: Peninsula College employee, Alec Risk, earned a Bachelor's Degree in Applied Management from PC this June. His daughter, 5-year-old Taia Risk, celebrated her father's accomplishment by sharing graduation alongside him. The Peninsula College Early Childhood Education Program's preschool held a graduation ceremony this year, complete with caps, gowns, and hoods.

Photo credit: Rick Ross

04	PC GRADUATES
06	GET STARTED
08	PATH TO GRADUATION
10	DISCOVER YOUR PATH
12	COMING THIS FALL
15	NEW PROGRAM: SCOPE
16	FALL QUARTER CLASSES
18	ARTS & COMMUNICATIONS
19	BUSINESS & MANAGEMENT
20	HEALTHCARE
21	INFORMATION TECHNOLOGY
22	MATH & SCIENCE
23	SKILLED TRADES
24	SOCIAL SCIENCES & EDUCATION
25	PIRATE ATHLETICS
26	TESTING SERVICES



did you know?

In 2018-2019, we awarded **574** degrees & certificates

17

BAS

256

Associate
in Arts

3

Associate in
Arts Honors

13

Associate
in Science

2

Associate
in Science
Honors

5

Associate
in Business

28

Associate
in Nursing

48

Associate in
Applied Science
Transfer

103

Associate
in Applied
Science

38

Certificates

58

High School
Diplomas

3

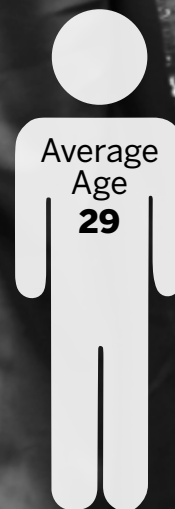
GED

47 students earned the President's medal

65 members in Phi Theta Kappa Honor Society

103 Running Start students graduated from high school *and* received a degree from PC

27 International students graduated



Age Range of Students



FOLLOW US

& STAY UPDATED



FALL QUARTER IMPORTANT DATES

Financial Aid application due	Aug 15
Tuition due	Aug 21
Registration closes	Sep 20
First day of quarter	Sep 23
Veterans Day holiday	Nov 11
Work day (no class)	Nov 27
Thanksgiving Day holiday	Nov 28-29
Last day of quarter	Dec 11



GET YOUR **BACHELOR'S DEGREE IN APPLIED MANAGEMENT**

This accredited degree is designed to fit your busy life and can be earned **100% online.**

Apply today.

GET STARTED

1

▶ Apply / Reapply

pencol.edu/getstarted

Apply online or in person. There is no application fee. The earlier the better.

2

▶ Find money

pencol.edu/financial/apply-for-aid

Begin the process of applying for financial aid and scholarships.

3

▶ Take placement assessment*

pencol.edu/admissions/testing-center

*Not all classes require a placement assessment.

4

▶ Get oriented

pencol.edu/admissions/new-student-orientation

Online orientation is available for students who live out of the area.

5

▶ Meet with an advisor and register

pencol.edu/advising

Meet with an advisor to create your roadmap for success and register for classes.

6

▶ Pay tuition

pencol.edu/financial/payment-options

Pay your tuition and fees with the online payment option, in person, or by mail. A payment plan option is available too.



SCHOLARSHIPS

(360) 417-6390

Students who are or will be attending PC can apply for a number of scholarships

WORK-STUDY

(360) 417-6359

Students gain work experience while earning money for college

BFET


(360) 417-6296

Provides job search training, educational services, skills training and more to Basic Food (SNAP) recipients

NONDISCRIMINATION STATEMENT: Peninsula College does not discriminate on the basis of race, color, religion, national origin, sex, disability or age in its programs and activities. Coordination of compliance is the responsibility of the Human Resources Officer, PC HR Office, (360) 452-9277.

CONFIDENTIALITY OF STUDENT RECORDS: Peninsula College follows the Family Educational Rights and Privacy Act (FERPA). For more information, visit pencol.edu/407-confidentiality-student-records-ferpa

OUT OF 4 PC STUDENTS RECEIVE MONEY TO HELP PAY FOR COLLEGE



OPPORTUNITY GRANT

(360) 417-6342

Assists low-income Washington state residents who have not yet earned a degree (Associate or higher)

TUITION PAYMENT PLAN

(360) 417-6232

Apply to have your tuition and fees divided into three payments

WORKFIRST PROGRAM

(360) 417-6296

Assists parents receiving Temporary Assistance for Needy Families (TANF) who want to further their education

WORKER RETRAINING

(360) 417-6263

Provides tuition-free retraining opportunities for laid off, unemployed and underemployed workers

FINANCIAL AID

(360) 417-6390

Start your financial aid file while you complete your other college application requirements

COMMUNITY RESOURCES

(360) 417-6340

Organizations that provide resources, both career oriented and financial, for students and the community

VETERANS BENEFITS

(360) 417-6339

Veterans and veterans' dependents may qualify for veterans educational benefits

STUDENT LOANS


(360) 417-6390

Funded by the federal government and available to students

\$1,000 AWARD FOR LOCAL HIGH SCHOOL GRADUATES

(360) 417-6231

Covers more than one fifth of the College's annual tuition and fees
funding still available for a limited time



GET YOUR COLLEGE EDUCATION FASTER, SAVING TIME AND MONEY

Whether you plan to start your career after graduation, or transfer to a university for further studies, our Areas of Study pathways offer a clear and direct plan to get you there. We offer guidance and support from application to graduation.

HOW DOES IT WORK?

- » Programs are grouped together by field of interest
- » Advising helps you choose a path and stay on it
- » You have a team of faculty, staff, and other students interested in your career field

WHY IS IT BETTER?

- » Take only the classes that you need
- » Earn your degree or certificate faster
- » Save time and money

Following a clear pathway from Peninsula College to the career or university you want keeps you on track for the job you want.



EXPERIENCE A FASTER, MORE EFFICIENT PATH TO GRADUATION

DISCOVER YOUR PATH TODAY

WITH
AREAS OF STUDY

**Find classes that relate to your interests, earn
your degree faster, and graduate.**

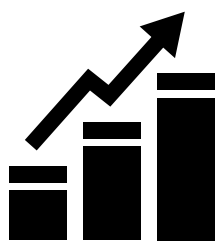
Peninsula College offers seven areas of study, making it simple to plan and follow a customized academic path to career success. The programs in these areas lead to college credentials including technical certificates, two-year associate degrees, and a Bachelor's of Applied Management degree.

No high school diploma? No problem! Our pathways let you earn a diploma and a degree at the same time.



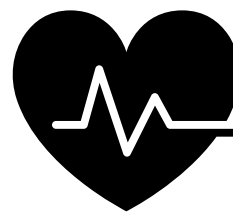
Arts & Communications

pg 18



Business & Management

pg 19



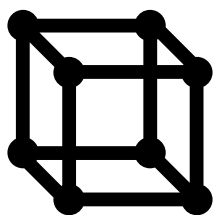
Healthcare

pg 20



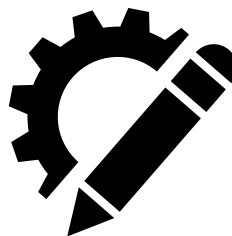
Information Technology

pg 21



Math & Science

pg 22



Skilled Trades

pg 23



Social Sciences & Education

pg 24

PIRATE PANTRY

PC is partnering with the Port Angeles Food Bank to provide an on-campus food pantry for students who do not have enough to eat.

A 2019 survey of PC students revealed:

42% did not eat when they were hungry because there was not enough money for food

57% said that "often or sometimes" when the food they bought didn't last, they did not have money to buy more

59% said they "often or sometimes" could not afford to eat balanced meals

All currently enrolled students will be able to use this resource. It will be run by members of the PC Associated Student Council, Student Services staff, faculty and volunteers across campus.

An official grand opening, and more details about hours and location, will be revealed this fall on social media and the college website.

Our Basic Food Employment and Training (BFET) and WorkFirst programs have relocated to the P Building on the west side of our Port Angeles campus. Come find the people and services you need in our new location, next to the gym.

The Washington State BFET program provides job search, job search training, educational services, skills training, and other employment opportunities to Basic Food (SNAP) recipients. Additional services include childcare eligibility, tuition assistance, and assistance for required textbooks and class supplies. These services are offered at Peninsula College through a partnership between the Department of Social and Health Services (DSHS) and Peninsula College.

The WorkFirst Program helps parents be successful students. It is a referral based program that is partnered with DSHS, Employment Security, and Department of Commerce to assist parents receiving Temporary Assistance for Needy Families (TANF) that want to further their education. Parents participate in Basic Education for Adults, High School Completion, and Professional Technical degrees at Peninsula College.

NEW LOCATION FOR BFET & WORKFIRST

COMING THIS FALL

to our Port Angeles campus

CAREER & TRANSFER CENTER

Achieve your career, transfer, and employment goals with help from our new Career & Transfer Center, located in the Student Services atrium across from Pirate Central. Interested in exploring careers and not sure where to start? Stop by and let us introduce you to resources to help you identify aptitudes, interests, and strengths, investigate job options and incomes, and get on the right academic path and stay on it. Connect to local job market data to identify degree and certificate programs that lead to viable careers. You can also get support through workshops and seminars on job readiness skills or services that prepare you for successful transfer to a four-year college or university.

Services are available to you from application to graduation, and at any point along the way.

VET CENTER

Located in the Pirate Union Building, our new Veterans Center is close to the heart of student activities. Here PC's veteran students will find a welcoming community and a quiet study space, along with monthly workshops on topics like financial aid management, study strategies for students with traumatic brain injury and/or PTSD, career advising and more.

Get the social and academic support you need, when you need it.



These improvements are made possible through the Peninsula College PACE Project. The total cost of the Peninsula College PACE Project is \$2,762,938, with the US Department of Education funding 81% of total costs (\$2,227,618), and Peninsula College contributing the remaining 19% (\$535,320) of project costs. A total of \$425,000 of the Title III grant (\$85,000 per year for five years) represents "challenge" funds—a capacity building provision that requires fundraising of an equal amount. The combined matching and grant funds will be placed in a lasting endowment to support student success programs. The Peninsula College Foundation has committed to raising the matching \$425,000 on behalf of Peninsula College, and hopes to surpass the total endowment goal of \$850,000. The Foundation has established an endowment with funds raised to date, and is seeking additional contributions as the match effort continues. Any funds left unmatched will be lost, so please consider making a contribution today by contacting the Foundation office or by giving online to the ForPC, Forward Endowment at: pencil.edu/foundation/give/online.



YOU'RE BUSY.
WE GET IT.

BASIC EDUCATION FOR ADULTS

College and a meaningful career can become a reality for you. We offer morning and evening classes for our **High School Diploma and GED** prep courses and the cost is \$25 per quarter with financial assistance available.



If you are unemployed or need new skills for your job,

WORKER RETRAINING

may be able to help you.

Worker retraining is a state-funded program designed to support training costs for unemployed, or underemployed workers. This includes assistance with paying for classes, transportation costs, and educational supplies and tools. Support is provided in the form of a grant and does not have to be repaid.



For more information contact Brian Kneidl
bkneidl@pencol.edu | (360) 417-6263



UNIQUE NEW PROGRAM WITH A LOCAL FOCUS



Explore the science and culture of the Olympic Peninsula through our SCOPE (Science and Culture of the Olympic Peninsula Ecosystem) Program, launching this fall. Follow an interdisciplinary pathway to an AA or AS degree that emphasizes hands-on learning while exploring the culture and ecology of our mountains, forests, and sea. The fall courses for this pathway create a learning community that combines English Composition and Survey of Biology. It also includes History of Reason, an interdisciplinary course that explores foundational ideas about the roles science and culture play in our ecosystem. These courses will set the stage for an exploration of our cultural and natural history, as well as prepare you for future

field experiences and the completion of an independent capstone project in the second year of the program. This fall, join professors Barbara Blackie, Matt Teorey, and Arendt Speser for this unique program with a local focus!

FALL QUARTER CLASSES

ACCOUNTING

Principles of Accounting I ■

ADDICTION STUDIES

Intro to Addictive Drugs ⚙
 Phys/Pharm Alcohol & Drugs ⚙
 Chem Depend Counseling/Ethics ⚙
 DBHR HIV/AIDS ⚙
 Mental Health Issues-CDP ⚙
 Intervention in Chem Dep ⚙
 Internship ⚙

ADMINISTRATIVE OFFICE SYSTEMS

Digital Literacy ■⚙
 Word Processing Appl I ■⚙
 Medical Terminology I ■
 Healthcare Documentation I ■
 Word Processing Appl II ■
 Healthcare Documentation II ■
 Internship ⚙

ART

Art Appreciation ⚙
 History of Art I ■
 Intro to Painting ⚙
 Intermediate Painting ⚙
 Advanced Painting ⚙
 Drawing: Methods/Materials ⚙
 Explorations in Drawing ⚙
 Intro to Ceramics: Hand ⚙
 Intro to Ceramics: Wheel ⚙
 Intro to Ceramics: Wheel Throw ⚙
 Intermediate Ceramics Explore Clay ⚙
 Special Topic Studio Art I, II & III ⚙

ASTRONOMY

Survey of Astronomy ⚙

AUTOMOTIVE TECHNOLOGY

Basic Automotive Engines ⚙
 Auto Brake Systems ⚙
 Auto Steering/Suspension ⚙
 Engine Performance I, Basic Fuel ⚙
 Auto Electric Systems II ⚙
 Auto Trans & Transaxles ⚙

BACHELOR OF APPLIED SCIENCE IN APPLIED MANAGEMENT (BAS)

Managerial Accounting ■
 Mngmnt, Leader, Organization ■
 Applied Financial Management ■
 Project Management ■
 Human Resources Management ■
 Internship ■

BASIC EDUCATION FOR ADULTS

Basic Education Levels 1-6 ⚙■↓▲
 English as a Second Language 1-6 ⚙■↓▲
 GED® Preparation ⚙■↓▲
 High School Diploma ⚙■↓▲

BIOLOGY

Survey of Biology ⚙■
 General Bio/Cell Biology Emphasis ⚙↓
 Majors Ecology/Evolution ⚙
 Human Anatomy & Physiology I ⚙
 Field Investigations in Nearshore Topics II ⚙
 Elwha Lake Bed Restoration ⚙
 Native Plant: Fall ⚙

BUSINESS

Intro to Business ■
 International Business ■
 Payroll & Business Taxes ■
 Principles of Marketing ■

CHEMISTRY

Chemical Concepts w/ Lab ■
 Intro to Chemistry ■⚙
 Intro to Organic/Biochemistry ■
 General Chemistry w/ Lab I ⚙

COLLEGE SUCCESS

College Success ■⚙

COMMUNICATION STUDIES

Intro to Mass Media ⚙
 Literary Mag Product I ⚙▲
 Photojournalism I ⚙
 Adv Photojournalism II ⚙
 Internship I ⚙
 Public Speaking ⚙■
 Interpersonal Communications ■
 Intro Newspaper Prod I, II & III ⚙
 Adv Newspaper Pro IV, V & VI ⚙

COMPUTER APPLICATIONS TECHNOLOGY

Powerpoint Quick Course ■
 Windows Computing Overview ⚙▲↓
 Word Basics ⚙▲↓
 Excel Basics ⚙▲↓
 Access Basics ⚙▲↓
 Intro to Excel ■
 Intro to Microsoft Applications ■
 Windows ■
 Help Desk & Support Spec ■⚙
 Internship ⚙

COMPUTER BASED TRAINING

Intro to Keyboarding ■↓▲

COMPUTER SCIENCE

Intro Computer Science ■

CONSTRUCTION TECHNOLOGY (FORMERLY GREEN BUILDING)

Blueprint Reading ■
 Intro to Woodworking ⚙
 Foundations & Framing ⚙
 Green Bldg Concepts & Design ⚙
 Job Site Management ■

CRIMINAL JUSTICE

Intro to Criminal Justice ■
 Criminal Law ■
 Intro to Patrol Procedures ■

CYBERSECURITY & COMPUTER

FORENSICS

Intro to Cybersecurity ■⚙
 Ethical Hacking ■⚙

DRAMA

Intro to Theatre ⚙

EARLY CHILDHOOD EDUCATION

Intro to ECE ⚙▲↓
 Practicum I-III ⚙▲↓
 Math for Young Children ⚙▲↓
 Internship ⚙▲↓

ECONOMICS

Intro to Economics ■
 Microeconomics ■
 Macroeconomics ■

EDUCATION

Child Development ⚙▲↓
 Exceptional Child ⚙▲↓

ENGLISH

Fundamentals of English ■⚙▲↓
 English Composition I ■⚙▲↓
 English Composition II ■⚙
 Creative Writing I & II ■
 American Literature I ↓
 American Literature II ⚙
 Prof & Org Communications ⚙
 Special Topics/Seminars ↓

ENTREPRENEURIAL TRAINING

Right Path to Business ■

ENVIRONMENTAL SCIENCE

Survey of Environmental Science ⚙
 Field Investigation Nearshore II ⚙

FIRST AID

Industrial First Aid ⚙
 Emergency Medical Tech ⚙
 First Aid for Healthcare Providers ⚙

FRENCH

Adv French Conversation I ↓

GENERAL STUDIES

- Freshman Seminar ⚙️
- Studium Generale ⚙️
- Student Leadership ⚙️

GEOGRAPHY

- Intro to Physical Geography 📺

GEOLOGY

- Survey of Earth Science ⚙️

HEALTH EDUCATION

- HIV/AIDS Licensure - 4 hr 📺
- HIV/AIDS Licensure - 7 hr 📺
- Health and Wellness 📺

HISTORY

- World Civilizations I ⚙️
- World Civilizations III 📺
- U.S. History I ⚙️
- U.S. History II & III 📺

HOMELAND SECURITY /**EMERGENCY MANAGEMENT**

- Intro to Emergency Mgmt 📺
- Incident Command System 📺
- All Hazards Emergency Plan 📺
- Emerg Response Awareness 📺
- Special Topics 📺
- Emergency Operations Ctr 📺
- Homeland Sec Law, Ethics 📺
- Workbased Learning Exper 📺

HONORS

- Interdisciplinary Project Sem I ⚙️
- Honors Project ⚙️

HOSPITALITY & ECOTOURISM

- Intro to Hospitality 📺
- Sustainable Hosp Facilities Mngmt 📺
- Tech in Hospitality Industry 📺
- Hospitality Internship ⚙️

HUMAN DEVELOPMENT

- Portfolio Prior Learn ⚙️
- Online Classroom Success 📺
- Human Relations ⚙️
- Developmental Education I ⚙️↓

HUMANITIES

- Healthcare Policies, Ethics I ⚙️

INTEGRATED STUDIES

- Intro to Indigenous Humanities ⚙️▲
- Understanding Humanities ⚙️
- History of Reason ⚙️

INFORMATION STUDIES

- Research in Health & Social Sci 📺

INFORMATION TECHNOLOGY

- Fundamentals of Info Tech ⚙️
- Windows Domains 📺
- Internship ⚙️📺

MATH

- Applied Math/Prof Tech I 📺
- Intro to Algebra ⚙️📺↓
- Essentials Intermediate Algebra ⚙️📺
- Intermediate Algebra for Calc ⚙️📺↓
- Math in Society ⚙️📺
- Finite Mathematics ⚙️
- Precalculus I ⚙️
- Precalculus II ⚙️
- Intro to Statistics ⚙️📺
- Calculus I: Analytical Geometry ⚙️↓

MEDICAL ASSISTING

- Intro to Clinical Med Assist ⚙️
- Med Terminology/Med Assist ⚙️
- Medical Billing Concepts ⚙️
- Clinical Practicum ⚙️
- Med Assist Capstone ⚙️
- Intro to Patient Advocacy ⚙️

MULTIMEDIA

- Intro to Multimedia Graphics ⚙️📺
- Intro to Multimedia Web ⚙️📺
- Intro to Graphic Design ⚙️📺
- Digital Photography 📺
- Web Authoring 📺
- Infographic & Data Visual ⚙️📺
- Digital Video Projects ⚙️📺
- Internship ⚙️

MUSIC

- Music Appreciation ⚙️
- History of Rock and Roll ⚙️
- Jazz Ensemble ⚙️
- Jazz Improvisation Seminar ⚙️
- Vocal Ensemble I-III ⚙️
- Vocal Ensemble IV-VI ⚙️
- Beginning Piano ⚙️
- Intro to Guitar ⚙️

NURSING ASSISTANT, CERTIFIED

- Nursing Assistant Certified ⚙️

NURSING

- Nursing I ⚙️
- Fund Clinical Nursing Skills ⚙️
- Nursing IV, Theory ⚙️
- Nursing IV, Lab ⚙️

NUTRITION

- Nutrition in Healthcare I ⚙️

PHYSICAL EDUCATION

- Aerobic Fitness I & II ↓
- Conditioning and Wellness ⚙️▲↓
- Yoga ⚙️↓
- Tae Kwon Do I & II ⚙️
- Weight Training I, II & III ⚙️▲↓
- Adv Basketball Men I-II ⚙️
- Adv Basketball Women I-II ⚙️

PE PROFESSIONAL

- Sports Officiating ⚙️

PHILOSOPHY

- Intro to Philosophy 📺
- Ethics 📺

PHYSICS

- General Physics I w/ Lab ⚙️
- Engineering Physics I ⚙️

POLITICAL SCIENCE

- Intro to Political Science 📺⚙️▲
- American Government 📺↓

PSYCHOLOGY

- General Psychology ⚙️📺
- Psycsoc Issues Healthcare I & II ⚙️

SOCIOLOGY

- Intro to Sociology ⚙️📺
- Understanding Diversity ⚙️

SOCIAL SCIENCE / GLOBAL ISSUES

- Global Issues 📺⚙️

SPANISH

- Spanish I 📺⚙️▲↓
- Begin Span Conversation I ↓
- Inter Span Conversation I ↓
- Adv Span Conversation I ↓

SUSTAINABLE AGRICULTURE

- Sustainable Agriculture 📺

WELDING

- Beg Welding and Metal Fab I ⚙️
- Adv Welding and Metal Fab I ⚙️

⚙️ Offered in Port Angeles

▲ Offered in Forks

↓ Offered in Port Townsend

📺 Offered online



ARTS & COMMUNICATIONS

Join a dynamic and creative community of artists, designers, performers, and communicators.

CAREER OPPORTUNITIES INCLUDE:

Artist
Digital media strategist
E-book designer and publisher
Filmmaker
Graphic designer
Journalist
Musician
Philosopher
Photographer
Videographer
Web designer
Writer/author

PATHWAYS

- » Bridge to Native Pathways
- » Drama
- » Film
- » General Arts & Communications
- » Honors
- » Journalism
- » Literature
- » Multimedia Communications
- » Music Ensemble & Performance
- » Philosophy
- » Spanish
- » Studio Art



BUSINESS & MANAGEMENT

Get relevant technical skills that are in high demand. Our programs will help you become and remain competitive in today's rapidly changing job market.

CAREER OPPORTUNITIES INCLUDE:

Accountant
 Administrative office specialist
 Event planner
 Executive assistant
 Financial analyst
 General manager
 Hotel/lodging manager
 Human resource manager
 Marketing specialist
 Office assistant
 Operations supervisor
 Project manager

PATHWAYS

- » Accounting
- » Administrative Office Systems
- » Applied Management
- » Business
- » Business Administration
- » Computer Applications Technology
- » Entrepreneurship
- » Honors
- » Hospitality and Ecotourism



HEALTHCARE

PATHWAYS

- » Addiction Studies
- » Emergency Medical Technician
- » Medical Assisting
- » Medical Office Assisting
- » Nursing
- » Nursing Assistant
- » Pre-Healthcare

CAREER OPPORTUNITIES INCLUDE:

- Chemical dependency counselor
- Community health worker
- Emergency medical technician
- Healthcare administrator
- Lab technician
- Medical assistant certified
- Medical billing & coding specialist
- Medical office assistant
- Nursing assistant certified
- Phlebotomist
- Physical therapist assistant
- Registered nurse

Prepare for work in high demand, fast-growing positions, and opportunities to make a meaningful difference in the lives of others.



INFORMATION TECHNOLOGY

Prepare for jobs that use your analytical thinking and creative problem solving skills as you train for a high-tech career.

CAREER OPPORTUNITIES INCLUDE:

Computer systems analyst
Cyber security manager
Digital media manager
Helpdesk support specialist
Information security specialist
Multimedia developer
Network engineer
Security analyst
Software developer
Systems administrator
Video editor
Web developer/programmer

PATHWAYS

- » Computer Applications Technology
- » Cybersecurity & Computer Forensics
- » Information Technology-Systems Administration
- » Multimedia Communications



MATH & SCIENCE

Contribute to advances in life, sciences, math, physical sciences, and technology. Our laboratories and classrooms will help you learn to solve problems and find creative solutions to challenging projects.

PATHWAYS

- » Biology
- » Bioregion/SCOPE
- » Computer Science
- » Environmental Policy
- » Environmental Science
- » General Science
- » Honors
- » Math Education
- » Natural Resources Management
- » Physical Science
- » Sustainable Agriculture

CAREER OPPORTUNITIES INCLUDE:

- Astronomer
- Atmospheric scientist
- Bioengineer
- Biologist
- Chemist
- Computer scientist
- Engineer
- Environmental scientist
- Mathematician
- Materials scientist
- Physicist
- Sustainable agriculturist

154



SKILLED TRADES

Get specialized, hands-on training using the latest technologies that meet industry standards, in courses that have been developed with input from local employers.

PATHWAYS

- » Advanced Manufacturing
- » Automotive Technology
- » CNC Machining & Programming
- » Composites Recycling
- » Construction Technology
- » Welding Technology

CAREER OPPORTUNITIES INCLUDE:

Advanced manufacturer
Aluminum welder
Automotive mechanic
Carpenter
Composites recycling technician
Computer aided designer (CAD)
CNC programmer
Construction cost estimator
Construction manager
Manufacturing fabricator
Manufacturing technician
Welder



SOCIAL SCIENCES & EDUCATION

Earn your degree and advance your career. Use methods of science to understand the complex workings of the social world, including how we as human beings behave and interact.

PATHWAYS

- » Criminal Justice
- » Early Childhood Education
- » Education
- » General Social Sciences
- » History
- » Homeland Security & Emergency Management
- » Honors
- » Psychology
- » Sociology

CAREER OPPORTUNITIES INCLUDE:

Corrections officer
Early childhood educator
Emergency manager
Historian
Homeland security specialist
Human service assistant
Law enforcement officer
Political scientist
Professor
Pre-school teacher
Sociologist
Teacher K-12



SUPPORT PIRATE ATHLETICS

EXCELLENCE IN
ACADEMICS, ATHLETICS AND
CITIZENSHIP IS THE FOCUS
OF THE PIRATE ATHLETIC
ASSOCIATION (PAA).

The PAA provides student athletes with scholarships to study and participate in intercollegiate athletics.

Your generous support provides our student athletes with an incredible learning experience as a Peninsula College Pirate.

Our teams are among the best in the nation and we are proud of the number of student athletes who win NWAC All-Academic awards each year. The success of our student athletes, both in the classroom and on the court or field, has led to a very high percentage moving on to four year universities.

Supporting PAA provides opportunities for students to thrive in education, athletics, and in life.

- Creates educational opportunities
- Helps students to learn, grow and excel in their sport
- Encourages them to be part of, and give back to, our amazing community

**Join the Pirate Athletic
Association today!**



TAKE THE EXAMS YOU NEED, (CLOSE TO HOME

We offer testing services, when and where you need them.

**College placement,
both new PC students
and students testing
for other colleges**

Accuplacer

**Personal Trainer
certification, American
Board of Ophthalmology,
National Federation of
Paralegal Associations,
Transportation
Professional Certification
Board, and more**

Castle/Scantron

**Certification exams
for automotive
professionals,
including PC students
and community
members**

Prometric/ASE

**Exams for medical
related certification for
PC Medical Assisting
Program students
and community
members employed
in the medical field**

NCCT

(National Center for
Competency Testing)

**GED, EMT,
WEST-B, CompTIA,
and more**

PearsonVUE

ACT/SAT

**Assessment test for
students wanting to
enter the Nursing
Program at PC or
other colleges**

TEAS

(Test of Essential
Academic Skills)

Several of these services are also available at our Forks and Port Townsend locations.
Contact the PC Assessment & Placement Center for information about these services and more.

WHERE WILL YOU

GO?

“

My instructor taught on really diverse topics in a way that any student could identify with. She went deep into the topics over a short period of time. Deep enough that we had an understanding of what class was about and how it, and we, affect society. It was wonderful.”

”

OLGA PABLO

AA degree, transferring to a
Cardiovascular Ultrasound program

Fall quarter starts September 23
Enroll now!

pencol.edu/discoverpc





PENINSULA COLLEGE

1502 East Lauridsen Boulevard | Port Angeles, WA 98362

Non Profit Org.
US Postage
PAID
Kent, WA
Permit NO. 71

ECRWSS

Residential Postal Customer

COMPETITIVE GAMERS WE'RE RECRUITING STUDENTS FOR OUR NEW ESPORTS PROGRAM WANTED

More than just gaming, Esports can help students grow their information technology, arts and communications, and business and management interests while developing valuable life skills.

Change what it means to be a student athlete and help shape the future of competition by joining our Esports program today.