



Hodge P. Wasson

Alcohol and Drug Addiction Among the Northwest Native Americans, from a Historical-Cultural Perspective, with Implications for Future Treatment Strategies

This project examines the historical and cultural factors in the causes of alcoholism and addiction in the Pacific Northwest Native Americans in the hopes of developing greater treatment efficacy and a post-treatment transitional living facility. Thirty-six interviews were conducted of local tribal elders, treatment providers, and recovering Native alcoholics/addicts. The results indicate that a poor sense of cultural identity was a leading cause of the addiction and effective treatment strategies can address these and other related issues. Follow-up studies were examined and the conclusion was that a transitional housing facility after or during treatment, sensitive to Native cultural needs, would greatly enhance treatment success rates. Issues were discussed and solutions were suggested, including whether facilities should be located on or off reservation lands, and recommendations were made.

HONORS SYMPOSIUM

June 9, 2017



PENINSULA
COLLEGE



PENINSULA COLLEGE

Peninsula College does not discriminate on the basis of race, color, religion, national origin, sex, disability or age in its programs and activities. Coordination of compliance is the responsibility of the Human Resources Officer, PC HR Office, (360) 452-9277.

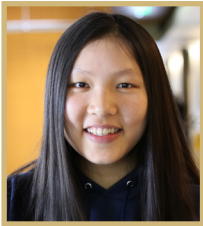
The Honors Program is a unique educational program for highly motivated students to engage in an intensive learning process where they make connections among ideas while developing critical thinking skills as they pursue an Associate of Arts or Associate of Science degree. Central to that process is the capstone experience that affords students an opportunity to work closely with a mentor while deeply engaged in research, service learning, artistic expression, or study abroad. At today's Honors Symposium, eight students will share the results of their capstone experience.



Lisa Tu Hoang

An analysis of increasing freshwater scarcity in the Lower Mekong Delta, Vietnam

The Mekong River originates in the Tibetan Plateau and flows through six countries: China, Myanmar, Laos, Thailand, Cambodia, and Vietnam. The Lower Mekong plays a key role in supporting the agricultural economy of the region and the lives of its inhabitants. Recent droughts instigated profound food security issues for the Vietnamese. While droughts have historically lowered the Mekong River, my analysis indicates that upon the completion of upriver dams, the levels of the Mekong permanently dropped. Thus, independent of droughts, Vietnam will confront increased scarcity of freshwater as a result of existing dams as well as those proposed, planned, and under construction.



Hoi Kiu Chan, Hannah

The effects that apparel marketing has on college-aged females' sense of body image

I surveyed seventy-one college-aged females, examining the marketing strategies, dialogues, and images used in video advertisements. I explored the effects on body image and self-esteem for the group affected the most. The first part of the survey found that the majority of respondents indicated greater body satisfaction when the message did not use ideal body types: those that are air-brushed/Photoshopped. The second part of the survey indicated that these same individuals were more inclined to purchase the products advertised using non-ideal body types. I also explored the advertising alternatives that can reduce body dissatisfaction among these females and the marketing effectiveness of these substitutions.



Supacha Denprasertsuk

The Health Effects of Water Fluoridation: an Examination of the Scientific Literature

Fluoride is a naturally occurring chemical. Community water fluoridation is the adjustment of fluoride to optimal levels to protect oral health. My systematic and meta-analysis of the literature indicates there is no significant scientific evidence of adverse health impacts associated with the consumption of optimally fluoridated water. Overall, the health benefits far outweigh potential risks. In addition to the literature review component of my research, I created a credibility index that ranked journals and the results of fluoride research. I found that articles indicating positive health effects were published in higher-ranked journals; whereas, those presenting adverse health impacts were published in lower-ranked journals.



Ka King Martin Lin

Surrealism and Nightmares in 20th Century Spanish Art

My objective is to prove that tragic events provoked certain Surrealists to create nightmarish paintings. Surrealist painters gain this idea from living nightmares, emanating from tragic events like the Spanish Civil War. I analyze the lives and work of Joan Miró, Pablo Picasso, and Salvador Dalí, who transformed their trauma into paintings. Although a negative energy is often presented in these paintings, I also found that Surrealism can be whimsical and presented in various ways. Bright colors and surprising shapes are sometimes in play with the stark images of skeletons and suggestions of death. Combining such paradoxical renderings is an important part of Surrealist art because it was developed to paint the world of dreams, presenting the subconscious mind of the artists to people.



Forrest Maynock

South Park Versus Celebrity: Combating the Marketing, Obsession, and "Moral High Ground" Behind Hollywood Culture

South Park is a significant form of cultural critique. This analysis explores how South Park targets modern celebrity culture. I analyzed seven episodes of South Park to demonstrate how the show satirizes celebrities by targeting the marketing, obsession, and "moral high ground" of Hollywood culture, and disparages celebrities and exposes their "Huxleyan" nature to the public. This is an illustration of Debord's concept of "the spectacle." It is important for South Park to attack celebrities because they are an integral part of the western power structure that legitimizes the American cultural/social landscape. Satire is an important tool of free speech, as it holds cultural and social power structures accountable. South Park satirizes and dismantles the concept of modern celebrity in society with calculated precision.



Sierra Renée Saxe

Our Latin Roots: The Formative Role of Latin in the Establishment of Old English

This project explores specific ways the Roman Empire, through Latin, influenced the establishment of the English language. To explore this question I focused on the formative periods in the establishment of English: the Proto-English Period (1-449 AD) and the Old English Period (450-1100 AD). My focus is on the relevant history and the evolution of the words borrowed from Latin into Proto-English and Old English. I employed historical and comparative linguistic methods and used both techniques to cross-reference my findings. I discovered meaningful loanword patterns and Latin influences unique to Old English during that period of European history.