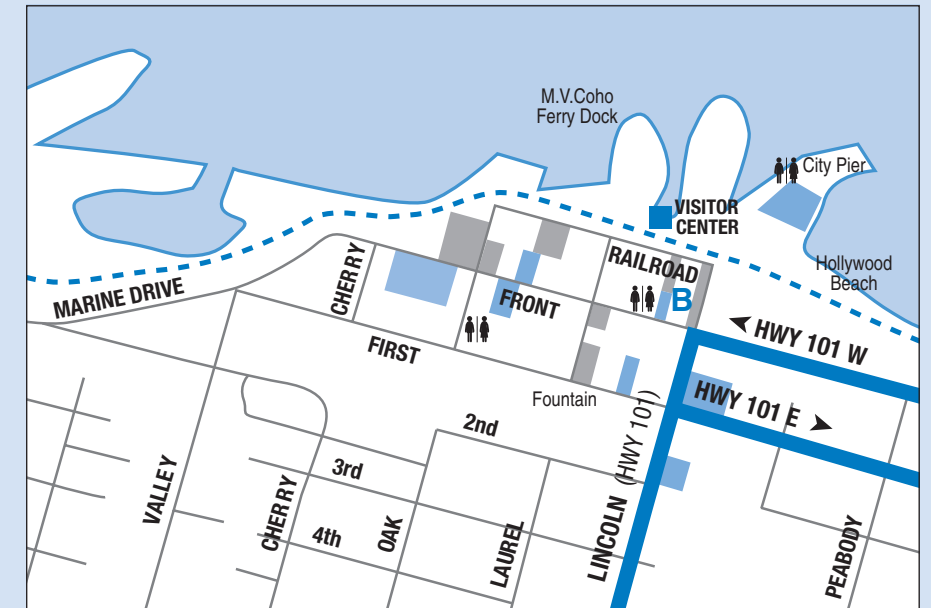
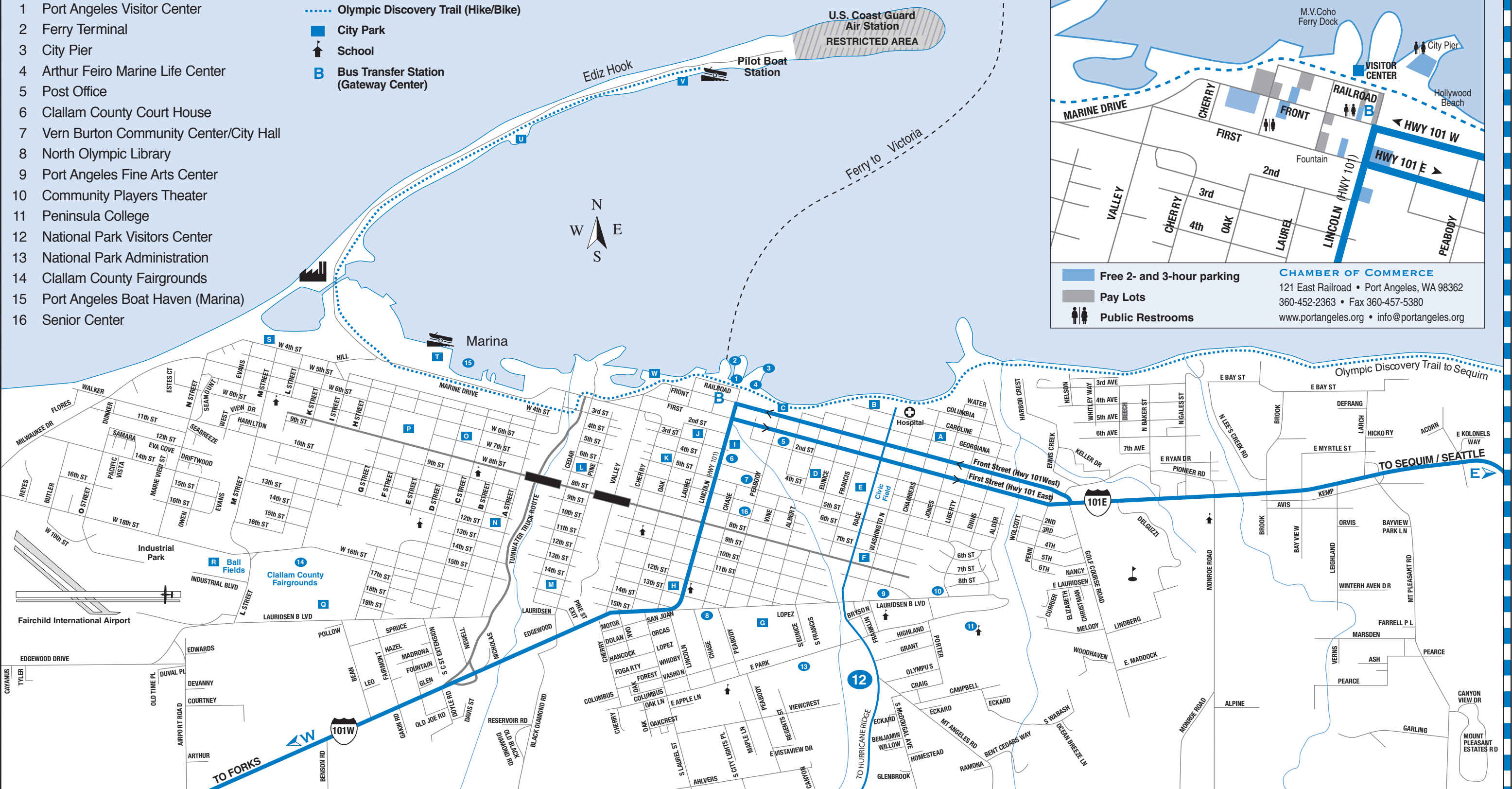


# PORT ANGELES: THE AUTHENTIC NORTHWEST.

- 1 Port Angeles Visitor Center
- 2 Ferry Terminal
- 3 City Pier
- 4 Arthur Feiro Marine Life Center
- 5 Post Office
- 6 Clallam County Court House
- 7 Vern Burton Community Center/City Hall
- 8 North Olympic Library
- 9 Port Angeles Fine Arts Center
- 10 Community Players Theater
- 11 Peninsula College
- 12 National Park Visitors Center
- 13 National Park Administration
- 14 Clallam County Fairgrounds
- 15 Port Angeles Boat Haven (Marina)
- 16 Senior Center

- Olympic Discovery Trail (Hike/Bike)
- City Park
- School
- Bus Transfer Station (Gateway Center)

U.S. Coast Guard  
Air Station  
RESTRICTED AREA



Free 2- and 3-hour parking

Pay Lots

Public Restrooms

**CHAMBER OF COMMERCE**  
121 East Railroad • Port Angeles, WA 98362  
360-452-2363 • Fax 360-457-5380  
www.portangeles.org • info@portangeles.org

## WEST

Lake Crescent 20 mi  
Marymere Falls 24 mi  
Sol Duc Hot Springs 44 mi

Elwha River 9 mi  
Forks 56 mi  
Hoh Rainforest 88 mi

## NORTH

Victoria (by ferry) 18 mi  
Vancouver Island (by ferry) 18 mi

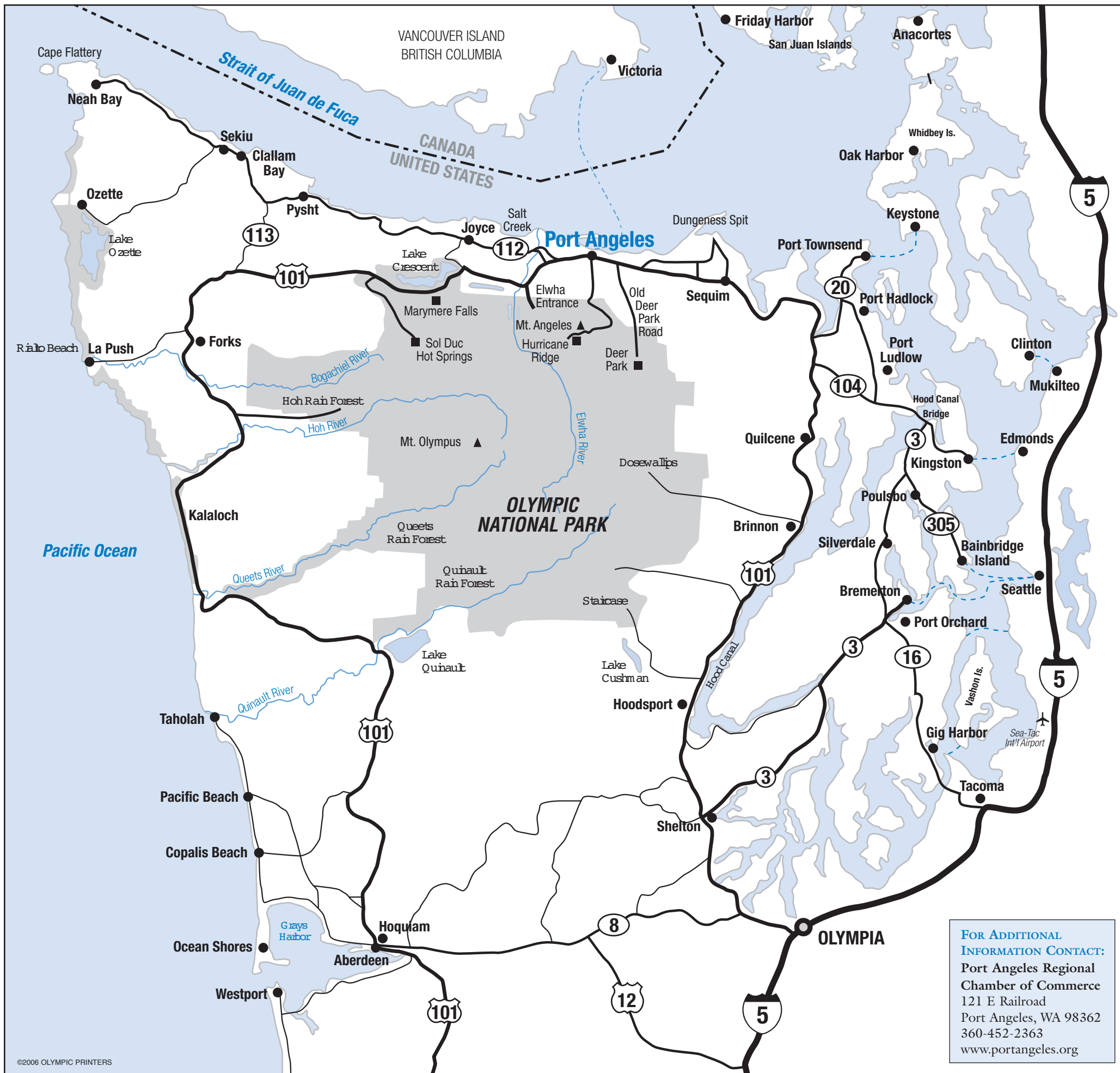
## SOUTH

Olympic Nat'l Park Visitors Center 3 mi  
Heart O' The Hills 9 mi  
Hurricane Ridge 17 mi

## EAST

Sequim 15 mi  
Dungeness Spit 20 mi  
Port Townsend 50 mi

Kingston Ferry 68 mi  
Bainbridge Island Ferry 76 mi  
Sea-Tac via Tacoma 125 mi



## PORT ANGELES IS VERY EASY TO GET TO BY AIR, FERRY, BOAT OR AUTO.

Port Angeles is very fortunate to have Fairchild International Airport just minutes away from lodging and recreation activities. Rental cars, taxis and community buses all run to and from the airport. The airport is serviced by several charter companies, which offer dramatic local scenic flights or executive air charter needs for the business traveler. Our commercial carrier is Kenmore Air, which offers daily non-stop flights to Boeing Field in Seattle, connecting to their complimentary van shuttle for the 12 minute ride to Sea-Tac Airport. Only 18 miles to Victoria, B.C. the MV Coho is a vehicle and passenger ferry with departures daily. A passport is required.

Without a car? Clallam Transit has regular bus service on the north Olympic Peninsula from Sequim, Port Angeles and Forks. Several rent-a-car companies are located at the airport and downtown, and taxis are available.

Dungeness Line operated by Olympic Bus Lines provides regularly scheduled bus service to Port Townsend, Seattle and Sea-Tac Airport. Rocket Transportation provides van service to Sea-Tac and other destinations.

### FOR MORE INFORMATION:

**Kenmore Air**  
800-543-9595 • [www.kenmoreair.com](http://www.kenmoreair.com)

**Rite Bros. Aviation**  
360-452-6226 • [www.ritebros.com](http://www.ritebros.com)

**MV Coho**  
360-457-4491 • [www.cohoferry.com](http://www.cohoferry.com)

**Clallam Transit**  
360-452-4511 • [www.clallamtransit.com](http://www.clallamtransit.com)

**Dungeness Line/Olympic Bus Lines**  
800-457-4492 • [www.olympicbuslines.com](http://www.olympicbuslines.com)

**Rocket Transportation**  
360-683-8087 • [www.gorocketman.com](http://www.gorocketman.com)

**Budget Rent-A-Car**  
800-345-8038 • [www.budget.com](http://www.budget.com)

**Enterprise Rent-A-Car**  
360-417-3083 • [www.enterprise.com](http://www.enterprise.com)

**Reggie's Limo**  
360-457-3706 • [www.reggieslimo.com](http://www.reggieslimo.com)

**Royal Taxi**  
360-710-7708 • [naviola@yahoo.com](mailto:naviola@yahoo.com)

### PARKS OF PORT ANGELES (LOCATIONS SHOWN ON REVERSE SIDE)

- |                                 |                              |                                    |
|---------------------------------|------------------------------|------------------------------------|
| <b>A</b> Georgiana Park         | <b>I</b> Veterans Park       | <b>Q</b> Lincoln Park              |
| <b>B</b> Francis St. Park       | <b>J</b> James Park          | <b>R</b> Volunteer Field           |
| <b>C</b> Haynes Viewpoint       | <b>K</b> 5th and Oak Park    | <b>S</b> Crown Park                |
| <b>D</b> Jesse Webster Park     | <b>L</b> Charles Wilson Park | <b>T</b> Marina                    |
| <b>E</b> Dream Playground       | <b>M</b> Elks Playfield      | <b>U</b> Sail and Paddle Park      |
| <b>F</b> Rains Park             | <b>N</b> Wolverton Park      | <b>V</b> Harbor View Park          |
| <b>G</b> Lions Park             | <b>O</b> 7th and D Park      | <b>W</b> Valley Creek Estuary Park |
| <b>H</b> Hazel Porter Kiel Park | <b>P</b> Shane Park          |                                    |

### PORT ANGELES EDUCATIONAL SYSTEM

**Port Angeles School District**  
216 East 4th Street  
360-457-8575

**Peninsula College**  
1502 East Lauridsen Blvd.  
360-452-9277

**North Olympic Skill Center**  
905 West 9th Street  
360-565-1533

**Port Angeles High School**  
304 East Park Avenue  
360-452-7602

**Lincoln High School**  
924 West 9th Street  
360-452-9502

**Stevens Middle School**  
1139 West 14th Street  
360-452-5590

**Dry Creek Elementary**  
25 Rife Road  
360-457-5050

**Jefferson Elementary**  
218 East 12th Street  
360-457-4231

**Hamilton Elementary**  
1822 West 7th Street  
360-452-6818

**Roosevelt Elementary**  
106 Monroe Road  
360-565-1730

**Parents as Partners**  
Park & Peabody  
360-17-3779

**Franklin Elementary School**  
2505 South Washington  
360-457-9111

**Queen of Angels**  
1007 South Oak Street  
360-457-6903

**FOR ADDITIONAL INFORMATION CONTACT:**  
Port Angeles Regional Chamber of Commerce  
121 E Railroad  
Port Angeles, WA 98362  
360-452-2363  
[www.portangeles.org](http://www.portangeles.org)