

# DISCOVER PC

PENINSULA COLLEGE | FALL 2017

## Find Your Pathway To Success at PC

*Fall enrollment runs through September 15*

PAGE 2

PAGE

5

### Do you qualify for a FREE EDUCATION?

Our Worker Retraining Program provides financial support to students in the form of a grant and does NOT have to be repaid.

PAGE

6

### Get Started on a Pathway to your New Career

Preview some featured professional/technical programs that will make you career ready for the job you want.

PAGE

8

### Go Further, Faster and Get Ahead

Preview some featured face to face and online credit classes.



PENINSULA  
COLLEGE

COVER STORY:

## Find Your Pathway at PC

Get on track—save time and money on your education at Peninsula College. This efficient approach to education tracks your goals and makes sure you are getting everything you need.

It's not too late to register for Fall quarter. Get the hands on training you need to be career ready. Our small class sizes give you the one on one attention you deserve. We can prepare you

for college transfer, and offer a Bachelor of Applied Science in Applied Management that you can take entirely online, right here on the Peninsula. Affordable, guided, and within reach. PC has what you need to get ahead and stay ahead.



"I'm really excited about the future. PC is a really cool place to be and has so much to offer a person of any age. It made me feel young and gave me a whole new perspective on life."

**Chris Enges, Multimedia Communications**



"I loved being on campus and the flexibility of only having to be there for two or three hours a day, rather than seven or eight," he said. "It felt like a better fit."

**Anthony Sanders, Bachelor of Applied Science in Applied Management Program**



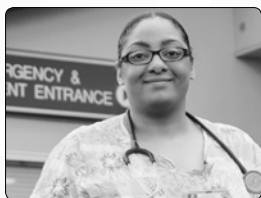
"I would say to folks who are considering college that they have a great opportunity available in their own backyard," Susie said. "Amazing professors, great campus - sometimes online courses aren't the best option, and most people our age can't just pack up and move. It's all right there. Don't even hesitate to get started toward a degree."

**Susie Sanders, Bachelor of Applied Science in Applied Management Program**



"I thought of it like, 'this is only two years of my life, and I can graduate with a bachelor's degree at 20," she said. "It's completely doable for anyone who has the drive."

**Emily Heike, Running Start / Associate of Arts**



"Life is about being dependable, flexible and hardworking. Every day is a new day and you have to be prepared. The PC staff really helped me map out my prerequisites and nursing school plan, so I didn't have to travel to Port Angeles very often."

**Lucritia Stansbury, Nursing**



## Locations

Serving the North Olympic Peninsula and Beyond.

### Peninsula College at Port Angeles



(360) 452-9277  
1502 E. Lauridsen Blvd.  
Port Angeles, WA 98362

### Peninsula College at Port Townsend



(360) 385-4605  
Fort Worden State Park  
202 Eisenhower Avenue  
Port Townsend, WA 98368

### Peninsula College at Forks



(360) 374-3223  
481 S. Forks Avenue  
Forks, WA 98331

### Peninsula College at the Composites Recycling Technology Center (CRTC)



(360) 819-1201  
2220 West 18th St.  
Port Angeles, WA 98363

# Steps to Get Started at PC

## Request Information:

[discoverpc.pencol.edu/form/signup](http://discoverpc.pencol.edu/form/signup)

Or Call: (360) 417-6340

### 1 ▶ Apply / Reapply

[pencol.edu/GetStarted](http://pencol.edu/GetStarted)

### 2 ▶ Find Money

[pencol.edu/financial/apply-for-aid](http://pencol.edu/financial/apply-for-aid)

### 3 ▶ Take Placement Assessment\*

[pencol.edu/admissions/testing-center](http://pencol.edu/admissions/testing-center)

\*Not all classes require a placement assessment

### 4 ▶ Get Oriented

[pencol.edu/admissions/new-student-orientation](http://pencol.edu/admissions/new-student-orientation)

### 5 ▶ Meet with an Advisor and Register

[pencol.edu/advising](http://pencol.edu/advising)

### 6 ▶ Pay Tuition

[pencol.edu/financial/payment-options](http://pencol.edu/financial/payment-options)

## Drop Back In

### Basic Education for Adults

Adults who need to complete high school and/or prepare for college benefit from High School Equivalency courses leading to a High School Diploma or GED. \$25.00 per quarter. Day and evening classes in Port Angeles. Day classes in Port Townsend, Forks, and Sequim. Enroll at any time!



Call (360) 417-6380 or visit us at: [pencol.edu/BasicEducation](http://pencol.edu/BasicEducation)

# Programs at a Glance [pencol.edu/programs](http://pencol.edu/programs)

## College Transfer

Two-year degrees that transfer to almost any major college:

- Associate in Arts
- Associate in Math Education
- Associate in Nursing
- Associate in Science
- Associate in Business
- Associate in Arts, Science or Business Honors

## Bachelor of Applied Science in Applied Management

Earn your four-year degree right here at PC either online or face-to-face. The Bachelor of Applied Science in Applied Management program allows you to combine your AAS, AAS-T, AA, or AS degree with upper division credits in applied management for a practical, relevant four-year degree. You will have a chance to apply your classroom learning to an internship in your second year.

## Transition Programs

Been away from school for a while? PC has programs and services to get you on track to a college degree:

- Basic Education for Adults/GED
- English as a Second Language/ English Language Acquisition
- Continuing Education
- Learning Center
- Tutoring
- High School 21+
- I-BEST

## Professional Technical

Degrees to change or enhance your career. Professional Technical programs offer Associate in Applied Science, Associate in Applied Science – Transfer and short-term certificates.

### PROGRAM AREAS:

- Addiction Studies
- Administrative Office Systems
- Advanced Manufacturing - CNC and Composites Technology
- Automotive Technology
- Business Administration
- Commercial Driver's License
- Computer Applications Technology
- Criminal Justice
- Cybersecurity and Computer Forensics
- Early Childhood Education
- Emergency Medical Technician
- Entrepreneurship
- Green Building - Carpentry
- Homeland Security / Emergency Management
- Hospitality & Ecotourism
- Information Technology-Systems Administration
- Medical Assisting
- Multimedia Communications
- Nursing Assistant Certificate
- Sustainable Agriculture
- Welding

## University Partners

Earn your Bachelor's degree on the Peninsula with one of our university partners:

- Central Washington University
- City University of Seattle
- The Evergreen State College
- Old Dominion University
- University of Alaska Southeast
- Western Washington University/Huxley

## Community & Business Education

PC offers a variety of classes to refresh your business skills as well as enhance your lifestyle, including:

- All of the Arts, including pottery wheel throwing, watercolors and quilting
- Computers/Technology, including web design, social media and home computer security
- Health and Wellness
- Job Training/Professional, including Flagging and Medical Billing & Coding
- Language and Culture

## Entrepreneur Institute

The Entrepreneur Institute provides timely and targeted entrepreneurial training, offering classes, workshops, and seminars targeted to a variety of different experience levels. It also allows access to additional business development resources throughout the region to provide comprehensive support.

### Business courses include:

- Business Plan Intensive
- Employee to Entrepreneur
- Web Marketing
- Financial Matters

For a list of all degrees and certifications that can be earned online, visit:

**[pencol.edu/programs/online-degrees](http://pencol.edu/programs/online-degrees)**



## VETERANS PRIORITY REGISTRATION AND RESOURCES

Veterans and National Guard Members can participate in Veterans Priority Registration. Peninsula College also offers additional veteran's resources. Find out if you qualify at [pencol.edu/Veterans](http://pencol.edu/Veterans)

# Professional Technical Programs

Enroll today in one of our high demand job programs

The Washington State Employment Security Department determines specific levels of job growth and total job openings to designate an occupation as high demand. Below are one and two year programs designated as high demand on the Olympic Peninsula.

Accounting\*  
 Administrative Office Systems\*  
 Addiction Studies  
 Advanced Manufacturing - CNC and  
 Composites Technology  
 Automotive Technology  
 Business Administration\*  
 Computer Applications Technology\*  
 Cybersecurity and Computer Forensics\*  
 Early Childhood Education\*

Emergency Medical Technician  
 Green Building-Construction Management  
 Hospitality and Ecotourism\*  
 Information Technology -  
 Systems Administration\*  
 Medical Assisting  
 Multimedia Communications - Web Design\*  
 Nursing  
 Nursing Assistant (NAC)  
 Welding

\* Indicates degree can be completed at a distance.

Program Details: [pencol.edu/proftech](http://pencol.edu/proftech)

A complete listing of Fall classes can be found at [classes.pencol.edu/Fall2017](http://classes.pencol.edu/Fall2017)

## Can't Afford College? PC can help!

Financial support that is provided to the students in the form of a grant **does NOT have to be repaid.**

The **Worker Retraining Free Tuition Program** at Peninsula College is a state funded program designed to support instruction and training costs. It assists students interested in Adult Basic Skills and Professional-Technical programs such as Business, Nursing, Welding, and Criminal Justice with tuition expenses, books, dependent care assistance, and transportation costs, along with an educational supply or tool stipend. Additionally, funds can now be used to earn your Bachelor's degree at PC.

**For more information about the Worker Retraining Free Tuition Program, contact:**

Brian Kneidl, Worker Retraining Navigator at (360) 417-6263, or email [bkneidl@pencol.edu](mailto:bkneidl@pencol.edu), or visit: [pencol.edu/worker-retraining](http://pencol.edu/worker-retraining)

# Get Started on a Pathway to your New Career



## Addiction Studies Program [pencol.edu/proftech/addiction-studies](http://pencol.edu/proftech/addiction-studies)

*Start on a path to a rewarding career.*

Sample Fall Schedule		CREDITS	CREDITS	
ENGL& 101: English Composition I	5	HSSA 105: Physiology/Pharmacology Alcohol/Drugs	5	
HSSA& 101: Introduction to Addictive Drugs	5	HSSA 190: DBHR HIV/AIDS Brief Risk, Airborne Pathogens	1	



## Administrative Office Systems Program [pencol.edu/proftech/administrative-office-systems](http://pencol.edu/proftech/administrative-office-systems)

*Jumpstart your future in the program of choices.*

Sample Fall Schedule	CREDITS		CREDITS
AOS 101: Digital Literacy	5	BUS& 101: Introduction to Business	5
AOS 105: Word Processing Applications I	5		



## Advanced Manufacturing-CNC Composites Program [pencol.edu/proftech/composites-technology](http://pencol.edu/proftech/composites-technology)

*Are you interested in creating new and innovative products?*

Sample Fall Schedule		CREDITS			CREDITS
COMP 100: Composites Safety	1	COMP 121: Composites I			5
COMP 101: Survey of Composites	1	COMP 124: Composites Molding			3
COMP 113: Composites Measurement	2	COMP 125: Composites Drawings			2



## Automotive Technology Program [pencol.edu/proftech/automotive-technology](http://pencol.edu/proftech/automotive-technology)

*Prepare for a new career or enhance your industry skills.*

Sample Fall Schedule	CREDITS		CREDITS
ATEC 100: Basic Automotive	2	ATEC 115: Automotive Brake Systems	6
ATEC 110: Auto Steering and Suspension	6	FA 100 or FA 105 Industrial First Aid	1



## Business Administration Program [pencol.edu/proftech/business-administration](http://pencol.edu/proftech/business-administration)

*Become a successful part of the business world.*

Sample Fall Schedule	CREDITS		CREDITS
BUS& 101: Introduction to Business	5	BUS 220: International Business	5
ENGL& 101: English Composition I	5		



## Computer Applications Technology Program [pencol.edu/proftech/computer-applications-technology](http://pencol.edu/proftech/computer-applications-technology)

*Are you considering a career in computer technology?*

Sample Fall Schedule	CREDITS		CREDITS
CAT 100: Introduction to Microsoft Applications	4	ENGL& 101: English Composition I	5
CAT 111: Introduction to Windows	5	HUMDV 101 Success in the Online Classroom	1





## Criminal Justice Program [pencol.edu/proftech/criminal-justice](http://pencol.edu/proftech/criminal-justice)

*Secure your future in criminal justice.*

Sample Fall Schedule	CREDITS		CREDITS
CJ& 101: Introduction to Criminal Justice	5	ENGL& 101: English Composition I	5
CJ& 110: Criminal Law	5	HUMDV 101: Online Classroom Success	1



## Early Childhood Education Program [pencol.edu/proftech/early-childhood-education](http://pencol.edu/proftech/early-childhood-education)

*Make a positive difference in the lives of families.*

Sample Fall Schedule		CREDITS	
ECED& 105: Introduction to Early Childhood Educ.	5	ECED& 120: Practicum	5
ECED& 107: Health, Nutrition, and Safety	5	HUMDV 101: Online Classroom Success	1



## Green Building - Carpentry Program [pencol.edu/proftech/green-building](http://pencol.edu/proftech/green-building)

*Hone your craft in sustainable design and construction.*

Sample Fall Schedule		CREDITS			CREDITS
GRBD 101: Introduction to Woodworking	3		GRBD 165: Introduction to Alternative Energy	5	
GRBD 106: Foundations & Framing	5		GRBD 210: Jobsite Management	3	



## Hospitality and Ecotourism Program [pencol.edu/proftech/hospitality-and-ecotourism](http://pencol.edu/proftech/hospitality-and-ecotourism)

*Earn a degree or certificate doing what you love, where you love!*

Sample Fall Schedule		CREDITS			CREDITS
HOSP 100: Introduction to Hospitality		5	ENGL& 101: English Composition I		5
AMATH 121: Applied Math for Prof Tech		5			



## Information Technology Program [pencol.edu/proftech/information-technology](http://pencol.edu/proftech/information-technology)

*Launch into the exciting career field of computers and technology!*

Sample Fall Schedule		CREDITS			CREDITS
IT 111: Fundamentals of Info. Technology	5		ENGL& 101: English Composition I		5
C SC 100: Introduction to Computer Science	5				



## Multimedia Communications Program [pencol.edu/proftech/multimedia-communications](http://pencol.edu/proftech/multimedia-communications)

*Get creative and master the skills employers want today.*

Sample Fall Schedule		CREDITS			CREDITS
Media 110: Introduction to Multimedia Graphics	5		Media 175: Principles of Digital Photography	4	
Media 111: Introduction to Multimedia Web	5				

# MYTHBUSTERS *for Professional Technical Programs*

**Myth:** Placement assessments are required for all Professional Technical classes.

**Fact:** Placement assessments are only required for select classes and degree seekers, so enroll today!

**Myth:** It will take 4 years to earn a degree.

**Fact:** We offer a variety of short term stackable certificates, one year certificates, and two year degrees that will help make you career ready.

**Myth:** I can't apply workplace experience toward my degree.

**Fact:** Students can earn college credit for prior work experience.

Learn more at: [pencol.edu/academic-resources/prior-learning-assessment](http://pencol.edu/academic-resources/prior-learning-assessment)

## Studium Generale



Enroll in 2 credits of **Studium Generale** this fall quarter and join the conversation with fellow students and individual guest speakers of all academic disciplines.

Studium is every Thursday from 12:35-1:25pm beginning fall quarter.

For more information, visit:

**[classes.pencol.edu/Fall2017/G%20S](http://classes.pencol.edu/Fall2017/G%20S)**



*Make a Difference in Your Community  
while Earning Credits Towards a Degree*

## SERVICE LEARNING

Service Learning provides Peninsula College students the opportunity to gain hands-on experience in their academic area of interest by directly working with nonprofit partners in our community. In this class, you will apply online learning and meaningful reflection to current social issues, environmental concerns and community needs. Enroll in **IS 201 Service Learning**.

For more information, visit:

**[classes.pencol.edu/Fall2017/I%20S](http://classes.pencol.edu/Fall2017/I%20S)**



# Go Further, Faster and Get Ahead!

Here's a preview of some featured face to face and online credit classes to get you on track.

## Humanities

### **I S 101: Understanding Humanities**

Class is offered TWThF 11:30AM-12:30PM  
[classes.pencol.edu/Fall2017/I%20S](http://classes.pencol.edu/Fall2017/I%20S)

### **ART 126: History of Art**

Class is offered TTh 9:10AM-11:20AM  
[classes.pencol.edu/Fall2017/ART](http://classes.pencol.edu/Fall2017/ART)

### **ART& 100 Art Appreciation**

Class is offered WF 11:30AM-1:40PM  
[classes.pencol.edu/Fall2017/ART](http://classes.pencol.edu/Fall2017/ART)

## Social Sciences

### **POLS& 202 American Government**

Class is offered online.  
[classes.pencol.edu/Fall2017/POLS](http://classes.pencol.edu/Fall2017/POLS)

### **PSYC& 100 General Psychology**

Class is offered online or TWThF 10:20AM-11:20AM  
[classes.pencol.edu/Fall2017/ART](http://classes.pencol.edu/Fall2017/ART)

### **SOC 115 Understanding Diversity**

Class is offered TWThF 11:30AM-12:30PM  
[classes.pencol.edu/Fall2017/SOC](http://classes.pencol.edu/Fall2017/SOC)

### **HIST& 126 World Civilizations I**

Class is offered TWThF 11:30AM-12:30PM  
[classes.pencol.edu/Fall2017/HIST](http://classes.pencol.edu/Fall2017/HIST)

### **HIST& 128 World Civilizations III**

Class is offered online.  
[classes.pencol.edu/Fall2017/HIST](http://classes.pencol.edu/Fall2017/HIST)

### **HIST& 146 U.S. History I**

Class is offered TWThF 9:10AM-10:10AM  
[classes.pencol.edu/Fall2017/HIST](http://classes.pencol.edu/Fall2017/HIST)

### **HIST& 148 U.S. History III**

Class is offered online.  
[classes.pencol.edu/Fall2017/HIST](http://classes.pencol.edu/Fall2017/HIST)

### **ECON 101: Intro to Economics**

Class is offered online.  
[classes.pencol.edu/Fall2017/ECON](http://classes.pencol.edu/Fall2017/ECON)

### **ECON& 202 Macroeconomics**

Class is offered online or TWThF 9:10AM-10:10AM  
[classes.pencol.edu/Fall2017/ECON](http://classes.pencol.edu/Fall2017/ECON)

## Natural Science

### **CHEM& 110L Chemical Concepts**

Class is offered online.  
[classes.pencol.edu/Fall2017/CHEM](http://classes.pencol.edu/Fall2017/CHEM)

### **CHEM& 161L General Chemistry w/Lab I**

Class is offered TTh from 11:30AM-1:30PM  
 and Wednesdays 1:30PM-4:50PM  
[classes.pencol.edu/Fall2017/CHEM](http://classes.pencol.edu/Fall2017/CHEM)

### **CHEM& 241 Organic Chemistry**

Class is offered WF 11:30AM-1:30PM  
[classes.pencol.edu/Fall2017/CHEM](http://classes.pencol.edu/Fall2017/CHEM)

### **ENVS& 100 Survey of Environmental Science**

Class is offered TWThF 10:20AM-11:20AM  
[classes.pencol.edu/Fall2017/ENVS](http://classes.pencol.edu/Fall2017/ENVS)

For the full list of Fall 2017 classes, visit:

**[classes.pencol.edu/Fall2017](http://classes.pencol.edu/Fall2017)**

## PHYSICAL EDUCATION CLASSES

Get in Shape this Fall with our Self-Paced Fitness Classes



For class information, visit:

**[classes.pencol.edu/Fall2017/P%20E](http://classes.pencol.edu/Fall2017/P%20E)**

## Earn a Bachelor's Degree without leaving the Olympic Peninsula



### Apply Now for PC's Bachelor of Applied Science in Applied Management Program.

The Peninsula College Bachelor of Applied Science in Applied Management degree is designed to fit your busy life. This degree is accredited and can be taken 100% online or face-to-face in evening classes. Money to pay for college is available to those who qualify. Get started on your degree today!

For more information, visit:

**[pencol.edu/bas](http://pencol.edu/bas)** or call us at **(360) 417-6497**

## Do you have a high school diploma?

Peninsula College in Port Angeles has a special program to help you obtain your diploma.



Peninsula College's High School 21+ program was created with working adults and parents in mind. High School 21+ offers a number of courses online and in the classroom, allowing you to complete work according to your schedule. We work closely with you so that you can earn the high school diploma that will **shape your future!**

*Grants, Scholarships and Financial Aid are available for those who qualify*

For more information, visit:  
**[pencol.edu/Fall](http://pencol.edu/Fall)**

# Music

## Classes at PC

### VOCAL ENSEMBLE

**MUSC 146, 147 and 148 Vocal Ensemble**

The study and performance of specialized contemporary and jazz vocal music suitable for beginning and advanced students.

**Class is offered TTh 10:20AM-12:20PM**

More information about the class can be found  
**[classes.pencol.edu/Fall2017/MUSC](http://classes.pencol.edu/Fall2017/MUSC)**

### JAZZ ENSEMBLE

**MUSC 136, 137 and MUSC 138 Jazz Ensemble**

Are you interested in rehearsing and performing with a jazz big band? If you are, talk to PC music professor Dr. David Jones ([djones@pencol.edu](mailto:djones@pencol.edu) or 417-6405) and find out how you can become part of one of the peninsula's most popular musical ensembles.

**Class is offered TTh 1:30pm-3:40pm**

More information about the class can be found  
**[classes.pencol.edu/Fall2017/MUSC](http://classes.pencol.edu/Fall2017/MUSC)**

### BEGINNING PIANO AND GUITAR

**MUSC 158: Beginning Piano**

**MUSC 161: Intro to Guitar**

Learn to play the piano or guitar and use it towards your elective by taking MUSC 158 Beginning Piano or MUSC 161 Intro to Guitar this fall!

For more information, visit:

**[classes.pencol.edu/Fall2017/MUSC](http://classes.pencol.edu/Fall2017/MUSC)**

For the full list of Fall quarter classes visit:

**[classes.pencol.edu/Fall2017](http://classes.pencol.edu/Fall2017)**

## Associate of Arts Degree

Earn more and save more at PC

ADULTS OVER

25

WITH A 2 YEAR DEGREE

EARN ON AVERAGE

18%

MORE THAN THOSE WITH A  
HIGH SCHOOL DIPLOMA

AND WITH A 4 YEAR DEGREE

68%

MORE THAN THOSE WITH A  
HIGH SCHOOL DIPLOMA

Earn your

## Associate of Arts Degree

at Peninsula College

Earn a two-year degree by attending face-to-face classes or online to accommodate your schedule.

For more information, email us at:

[discoverpc@pencol.edu](mailto:discoverpc@pencol.edu)



## Get Ahead

Human Development & College Success Classes

Whether you need life skills for the career world or for college success, Peninsula College has you covered.

**G S 100 College Learning Skills** will introduce study techniques, time management, learning styles, note taking, and other useful methods needed for classroom success.

Class is offered TTh 9:10AM-10:10AM

For more information about this class, visit:

[classes.pencol.edu/Fall2017/g%20s](http://classes.pencol.edu/Fall2017/g%20s)

**HUMDV 120 Human Relations** will introduce workplace skills, communication, team building, problem solving and leadership for success in the working world.

Class is offered TWTh 11:30AM-12:30PM

For information about this class, visit:

[classes.pencol.edu/Fall2017/humdv](http://classes.pencol.edu/Fall2017/humdv)

For the full list of Fall quarter classes visit:

[classes.pencol.edu/Fall2017](http://classes.pencol.edu/Fall2017)



## Business & Community Education Classes

Peninsula College also offers an array of non-credit classes! Look for the Community Education guide coming soon, or visit [pencol.edu/ce](http://pencol.edu/ce) to find out more.



## University Transfers

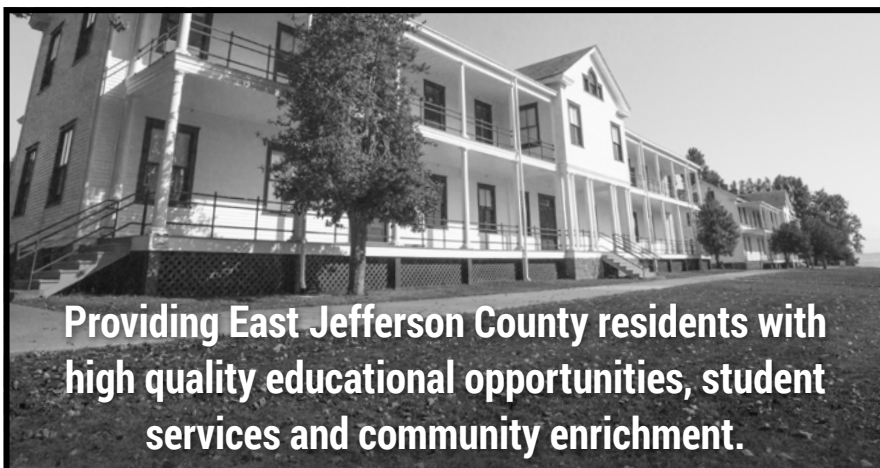
The most successful university students start out at a community college. Luckily, you've got Peninsula College right nearby!



- Transfer to a university debt free
- Online and face to face classes to fit your schedule
- Small class sizes taught by outstanding faculty
- Locations in both Clallam and Jefferson counties
- Solid partnerships with key universities

For more information, visit:

**[pencol.edu/degrees](http://pencol.edu/degrees)**



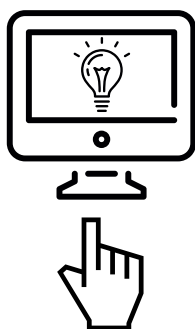
**Providing East Jefferson County residents with high quality educational opportunities, student services and community enrichment.**



## PENINSULA COLLEGE at Port Townsend

202 Eisenhower Ave., Port Townsend, WA. 98368

For more information call (360) 385-4605 or visit [pencol.edu/port-townsend](http://pencol.edu/port-townsend)



## Online Degrees offered at PC

### **PROFESSIONAL TECHNICAL**

Administrative Office Systems  
Business Administration  
Computer Applications Technology  
Criminal Justice  
Cybersecurity & Computer Forensics  
Multimedia Communications  
Entrepreneurship  
Homeland Security & Emergency Management  
Hospitality and Ecotourism  
Information Technology  
Sustainable Agriculture

### **TRANSFER DEGREE**

Earn the credits you need to transfer to a university!  
Associate in Arts – check the quarterly schedule at [classes.pencol.edu/Fall2017](http://classes.pencol.edu/Fall2017) and meet with your advisor to discuss your schedule and select classes!

### **BACHELOR DEGREE**

Advance in your career with a Bachelor's Degree!

For a complete listing, visit:

**[pencol.edu/programs/online-degrees](http://pencol.edu/programs/online-degrees)**

Or Call Student Services at:

**(360) 417-6340**

# Honors Program at PC



Honors Students present their Capstone Projects at the 2016-2017 Honors Symposium

## A one of a kind Honors Program at PC

The Peninsula College Honors Program brings together students motivated to achieve academic success. Honors students at Peninsula College say the program is exciting, allows them to pursue their education in classes made up of similarly motivated students, helps them identify and complete a project they are passionate about, and move forward to better pursue their life goals.

## Featured Honors Classes:

Learn in a classroom of motivated students and engage in challenging in-depth conversations by taking ENGL& 101 English Composition I or MATH& 146 Introduction to Stats. These classes will be taught at the Honors Program level, but open to all motivated students.

- ◆ **ENGL& 101, section EUH** is taught on campus TWThF from 10:20AM-11:20AM  
For more information visit: [classes.pencol.edu/Fall2017/ENGL](http://classes.pencol.edu/Fall2017/ENGL)
- ◆ **MATH& 146, section CUH** is offered TWThF from 9:10AM-10:10AM  
For more information visit: [classes.pencol.edu/Fall2017/MATH](http://classes.pencol.edu/Fall2017/MATH)

For more information, visit: [pencol.edu/honors-program](http://pencol.edu/honors-program)

## PC at Forks



## Serving the West End of the Olympic Peninsula



Peninsula College at Forks is located in the heart of the Olympic Peninsula in downtown Forks, Washington. The site offers academic, professional and technical, Basic Education for Adults (BEaA) and ELA (English Language Acquisition) courses. Interactive television (ITV) equipment allows select classes to be either broadcast or received among the Forks and Port Angeles campuses. A learning center is staffed to support students taking both on-line and face-to-face classes through tutoring, testing, or assessment.

For more information:

[pencol.edu/locations/forks-west-end](http://pencol.edu/locations/forks-west-end) | (360) 374-3223

## SCHOLARSHIPS AVAILABLE

For general scholarship information, visit: [pencol.edu/scholarships](http://pencol.edu/scholarships)

### Clallam Promise Scholarship:

The Clallam Promise Scholarship is a need-based scholarship available to students attending Peninsula College who have graduated from any Clallam County high school (Cape Flattery, Clallam Bay, Crescent, Forks, Lincoln, Neah Bay, Port Angeles, Quileute Tribal School, and Sequim). The scholarship is designed to provide a maximum quarterly award up to \$1,000 toward Peninsula College tuition and fees, with an additional \$300 available toward textbooks. Students must fill out the FAFSA to be considered for this first-come, first-served award.

Visit [pencol.edu/scholarships/clallam-promise-scholarship](http://pencol.edu/scholarships/clallam-promise-scholarship)

## ALUMNI & FRIENDS

1st Annual Picnic



Peninsula College invites our alumni, current and former staff and faculty to the First Annual Alumni & Friends Picnic, Friday September 15 at 5:30PM on PC's south lawn, located behind the Pirate Union Building.

The event is free and open to all Peninsula College Alumni, staff, faculty and their families.

[alumni.pencol.edu/events](http://alumni.pencol.edu/events)

## Basic Education

[pencol.edu/BasicEducation](http://pencol.edu/BasicEducation)

PC's Basic Education for Adults (BEaA) Program provides instruction for adults who wish to improve reading, writing, math, computer and English language skills. We also help prepare students wishing to earn their GED® or high school diploma.

### Programs include:

- ESL/ELA  
(English as a Second Language/English Language Acquisition)
- GED Preparation
- High School 21+
- I-BEST



## Funding Your Education

To assist students in paying for their education, Peninsula College offers several options for students who qualify. Due to deadlines and limited funds, students are encouraged to apply early. Some programs are designed to support students in specific situations. Eligibility for these programs are usually determined on a funds-available basis and require a separate application to access funds.

### FINANCIAL AID | (360) 417-6390

Applying for financial aid is a process that should be started as soon as possible. Work on your Financial Aid file at the same time you are completing other college application requirements.

### OPPORTUNITY GRANT | (360) 417-5694

Assists low-income Washington state residents who have not yet earned a degree (Associate or higher). The grant can provide funding for tuition/fees and books/supplies for eligible adults for up to 45 credits in specific programs.

### SCHOLARSHIPS | (360) 417-6390

Students who are attending or will be attending Peninsula College can apply now for any number of scholarships.

### TUITION PAYMENT PLAN | (360) 417-6232

You can apply to have your tuition and fees divided into three payments.

### VETERAN'S SERVICES | (360) 417-6224

Peninsula College recognizes and appreciates all who have served in the United States Armed Forces. If you are a veteran, or a survivor, or a dependent of a veteran working toward a degree or certificate, you may be eligible for veterans educational benefits.

### WORK-STUDY | (360) 417-6359

Offers students the opportunity to gain valuable work experience while earning money for college. Both on-campus and off-campus positions are usually available.

### WORKFIRST PROGRAM | (360) 417-6296

A referral-based program to assist parents receiving Temporary Assistance for Needy Families (TANF) that want to further their education. Parents participate in Basic Education for Adults, High School Completion, and Professional-Technical degrees at Peninsula College.

### WORKER RETRAINING | (360) 417-6263

This free tuition program provides retraining opportunities for laid off, unemployed, and dislocated workers in the state of Washington. The financial support provided to eligible students does NOT have to be repaid.

### COMMUNITY RESOURCES | (360) 417-6340

Peninsula College is in partnership with many organizations which provide resources, both career-oriented and financial, for students and the community.

### STUDENT LOANS | (360) 417-6390

Loans are funded through the federal government and are accessible to students who have filed the FAFSA.

## Need a Diploma or GED?

Not sure if you qualify for federal or state financial aid due to not having a High School Diploma or GED? Talk to Peninsula College about what program you're interested in and we can assist in navigating the steps to see if you will qualify.

For more information, visit:

**[pencol.edu/programs/high-school](http://pencol.edu/programs/high-school)**

Or call us at:

**(360) 417-6380**

## 2017–2018 Tuition & Fees

Credits	Resident	Nonresident	Resident Baccalaureate	Nonresident Baccalaureate
1	\$131.17	\$144.89	\$231.36	\$245.08
2	\$246.34	\$273.78	\$446.72	\$474.16
3	\$361.51	\$402.67	\$662.08	\$703.24
4	\$476.68	\$531.56	\$877.44	\$932.32
5	\$591.85	\$660.45	\$1,092.80	\$1,161.40
6	\$707.02	\$789.34	\$1,308.16	\$1,390.48
7	\$822.19	\$918.23	\$1,523.52	\$1,619.56
8	\$937.36	\$1,047.12	\$1,738.88	\$1,848.64
9	\$1,052.53	\$1,176.01	\$1,954.24	\$2,077.72
10	\$1,167.70	\$1,304.90	\$2,169.60	\$2,306.80
11	\$1,229.78	\$1,367.70	\$2,190.55	\$2,327.75
12	\$1,291.86	\$1,430.50	\$2,211.50	\$2,348.70
13	\$1,353.94	\$1,493.30	\$2,232.45	\$2,369.65
14	\$1,416.02	\$1,556.10	\$2,253.40	\$2,390.60
15	\$1,478.10	\$1,618.90	\$2,274.35	\$2,411.55

\* Tuition includes wellness fee, transportation fee and technology fee. Additional fees may apply.

\* Tuition rates are for U.S. Citizens, WA State Residents or Nonresidents.

## Opportunity Pathways

Through Opportunity Pathways, Washington State provides a variety of financial aid programs to help students and their families pay for college. For more information regarding state support visit:

[www.sbctc.edu/resources/documents/colleges-staff/programs-services/student-services/2016-17-state-support-letter.pdf](http://www.sbctc.edu/resources/documents/colleges-staff/programs-services/student-services/2016-17-state-support-letter.pdf)

This information is provided by the Washington Student Achievement Council (WASAC) as required by RCW 288.10.044.

For more information, call: **(877) 452-9277** or visit **[pencol.edu](http://pencol.edu)**



PENINSULA COLLEGE

1502 East Lauridsen Boulevard  
Port Angeles, Washington 98362

(360) 452-9277  
[www.pencol.edu](http://www.pencol.edu)

NON PROFIT ORG.  
U.S. POSTAGE  
PAID  
KENT, WA  
PERMIT NO. 71

ECRWSS

Residential Postal Customer

## What's YOUR Track?

### Planning to Transfer?

[www.pencol.edu/transfer](http://www.pencol.edu/transfer)

### Basic Education for Adults?

[www.pencol.edu/programs/  
adult-basic-skills](http://www.pencol.edu/programs/adult-basic-skills)

### Family Life Education?

[www.pencol.edu/fle](http://www.pencol.edu/fle)

### Running Start?

[www.pencol.edu/running-start](http://www.pencol.edu/running-start)

### Bachelor of Applied Science?

[www.pencol.edu/bas](http://www.pencol.edu/bas)

### Career Training Programs?

[www.pencol.edu/proftech](http://www.pencol.edu/proftech)

### Community & Business Education?

[www.pencol.edu/ce](http://www.pencol.edu/ce)

To view our Fall classes, visit:

**[classes.pencol.edu](http://classes.pencol.edu)**



DISCOVER  
**PC**

## Worker Retraining Now Available

You may qualify for a free education, see page 5 for details.

For information, visit:

**[pencol.edu/worker-retraining](http://pencol.edu/worker-retraining)**