

DISCOVER PC

PENINSULA COLLEGE | SPRING 2017

It's All About Our STUDENTS

Medical Assisting Students Explain What Makes the Program Special

PAGE 2

PAGE

5

Now Accepting Applications!

Medical Assisting and Nursing Programs

PAGE

7

Do you qualify for a FREE EDUCATION?

Our Worker Retraining Program provides financial support to students in the form of a grant and does NOT have to be repaid.

PAGE

7

Advanced Manufacturing - CNC & Composites Technology

Learn essential skills necessary for employment in the aerospace, marine, and recreational equipment industries, and other applications!



PENINSULA
COLLEGE

COVER STORY:

It's All About Our Students

Medical Assisting Students Explain What Makes the Program Special

What makes Peninsula College Medical Assisting Program graduates so special? According to Rachel Pairsh, the program's director, there are many factors, the most vital being the students themselves.

"I learn from them every day, and I couldn't be more proud of their successes," she said, adding that the best advocates for the program are the students themselves:

"I have always liked the medical field," said Segopotso "Elsie" Eaton, originally from Botswana, about her experience in the program. "Growing up in a small country, watching my family and friends die, pushed me in to getting in the medical field. I always felt like I could do more than just be there. The MA Program was a better fit for me because it gave me the knowledge I needed to help people. I have learned a great deal of skills throughout the program that are now useful to me as an ER Tech at Olympic Medical Center."

Student Brandi Adamich states: "I did my research and realized that not only was the Medical Assisting Program everything I wanted; it was in Port Angeles, my home town. Having a medical assisting program in a small town like Port Angeles allows for greater working opportunities for anybody that would like to pursue a career in allied healthcare. My patients inspire me to be a better person every day, and for that I am thankful. The Peninsula College Medical Assisting Program has changed me, for the better!"

Graduate Michael Salyer, a veteran of the United States military, had this to say: "I became interested in the program because I was interested in helping my community, and the MA program at PC allowed for me to stay close to home. The program was thorough, which prepared us for the demands of the medical assisting profession. The externship allowed me to apply the skills and techniques I learned in class to real life situations at a local clinic. Upon finishing the externship, I was offered a job at the site at which I worked, and I am now training to become the clinic manager at VIMO."

Applications are being accepted now for next fall's cohort, with a submission deadline of 5:00 pm on June 1, 2017. Applicants should note that there are several immunizations required for program entry, and some series may take 5-6 months to complete.

For more information, visit the Medical Assisting Program's webpage at: <http://pencol.edu/proftech/medical-assisting> or contact Rachel Pairsh at rpairsh@pencol.edu or (360)417-6414.

Cover Photo: *Kimberly Barton, OMP Surgery Clinic*



I had some very big shoes to fill when I took over as Director of the Peninsula College Medical Assisting Program in 2013. Jen Gouge had directed the program for almost 20 years before retiring. I am a proud PC alumnus, and had worked as Jen's assistant while in the program. The strong connections I had with the program helped me to assume the responsibility of educating and training future generations of dedicated healthcare professionals.

Since graduating from the program in 2010, I have gone on to earn my Medical Assisting - Certified credential from the Washington State Department of Health; a National Certified Medical Assistant credential from the National Center for Competency Testing (NCCT); a Certified Postsecondary Instructor credential from the NCCT; and a Certificate in Connected Adult Education from Renton Technical College. In addition, I have earned my Train-the-Trainer certificate in order to provide the Kitsap Public Health Region 2 Triage and Treatment curriculum to my students. Recently, I was asked to present my training materials at the upcoming State Board of Community and Technical Colleges' (SBCTC) Center of Excellence in Allied Health Deans and Directors meeting in Seattle, in coordination with the SBCTC's Center of Excellence in Homeland Security and Emergency Management.

After I graduated from the MA program, I honed my skills in various healthcare settings on the Peninsula, including at Jamestown Family Health and Olympic Medical Physicians. Connections with local employers have benefitted my students, as I am able to facilitate supply and equipment donations, guest lectures, networking events, and other opportunities for our students with local employers and healthcare workers.

Students of today are the providers of tomorrow, and Peninsula College has always had a great reputation for their support of their students, faculty and staff. PC and the Medical Assisting Program are fully committed to helping our students achieve success, wherever their life journey takes them.

For more information, please visit:

pencol.edu/proftech/medical-assisting

Locations

Serving the North Olympic Peninsula
and Beyond!

Peninsula College at Port Angeles



(360) 452-9277
1502 E. Lauridsen Blvd.
Port Angeles, WA 98362

Peninsula College at Port Townsend



(360) 385-4605
Fort Worden State Park
202 Eisenhower Avenue
Port Townsend, WA 98368

Peninsula College at Forks



(360) 374-3223
481 S. Forks Avenue
Forks, WA 98331

Peninsula College at the Composites Recycling Technology Center (CRTC)



(360) 819-1201
2220 West 18th St.
Port Angeles, WA 98363

Steps to Get Started at PC

Discover PC! Request Information:

discoverpc.pencol.edu/form/signup

1 ▶ Apply / Reapply

pencol.edu/GetStarted

2 ▶ Find Money

pencol.edu/financial/apply-for-aid

3 ▶ Take Placement Test*

pencol.edu/admissions/testing-center

*Not all classes require a placement test

4 ▶ Get Oriented

pencol.edu/admissions/new-student-orientation

5 ▶ Advise and Register

pencol.edu/advising

6 ▶ Pay Tuition

pencol.edu/financial/payment-options

Drop Back In!

Basic Education for Adults

Adults who need to complete high school and/or prepare for college benefit from High School Equivalency courses leading to a High School Diploma or GED. \$25.00 per quarter. Day and evening classes in Port Angeles. Day classes in Port Townsend, Forks, and Sequim. Enroll at any time!



Call (360) 417-6380 or visit us at: pencol.edu/BasicEducation

Programs at a Glance

www.pencol.edu/Programs

College Transfer

Two-year degrees that transfer to almost any major college:

- Associate in Arts
- Associate in Arts Bridge Program (inclusive of Native perspectives)
- Associate in Math Education
- Associate in Science
- Associate in Business
- Associate in Arts, Science or Business Honors

Bachelor of Applied Science in Applied Management

Earn your four-year degree right here at PC either online or face-to-face. The Bachelor of Applied Science in Applied Management program allows you to combine your AAS, AAS-T, AA, or AS degree with upper division credits in applied management for a practical, relevant four-year degree. You will have a chance to apply your classroom learning to an internship in your second year.

Transition Programs

Been away from school for a while? PC has programs and services to get you on track to a college degree:

- Basic Education for Adults/GED
- English as a Second Language/ English Language Acquisition
- Continuing Education
- Learning Center
- Tutoring
- High School 21+
- I-BEST

Professional Technical

Degrees to change or enhance your career. Professional Technical programs offer Associate in Applied Science, Associate in Applied Science – Transfer and short-term certificates.

PROGRAM AREAS:

- Addiction Studies
- Administrative Office Systems
- Advanced Manufacturing - CNC and Composites Technology
- Automotive Technology
- Alternative Fuels Program
- Business Administration
- Commercial Driver's License
- Computer Applications Technology
- Criminal Justice
- Cybersecurity and Computer Forensics
- Early Childhood Education
- Emergency Medical Technician
- Entrepreneurship
- Food Service Management
- Green Building - Carpentry
- Homeland Security / Emergency Management
- Hospitality & Ecotourism
- Information Technology-Systems Administration
- Medical Assisting
- Multimedia Communications
- Nursing
- Nursing Assistant Certificate
- Sustainable Agriculture
- Welding

University Partners

Earn your Bachelor's degree on the Peninsula with one of our university partners:

- Central Washington University
- City University of Seattle
- The Evergreen State College
- Goddard College
- Old Dominion University
- Western Washington University/Huxley

Community & Business Education

PC offers a variety of classes to refresh your business skills as well as enhance your lifestyle, including:

- All of the Arts, including pottery wheel throwing, watercolors and quilting
- Computers/Technology, including web design, social media and home computer security
- Health and Wellness
- Job Training/Professional, including Flagging and Medical Billing & Coding
- Language and Culture

Entrepreneur Institute

The Entrepreneur Institute provides timely and targeted entrepreneurial training, offering classes, workshops, and seminars targeted to a variety of different experience levels. It also allows access to additional business development resources throughout the region to provide comprehensive support.

Business courses include:

- Business Plan Intensive
- Employee to Entrepreneur
- Web Marketing
- Financial Matters



VETERANS PRIORITY REGISTRATION AND RESOURCES

Veterans and National Guard Members can participate in Veterans Priority Registration. Peninsula College also offers additional veteran's resources. Find out if you qualify at pencol.edu/Veterans

Professional Technical Education

For more program information, visit: pencol.edu/proftech

Enroll today in one of our high demand job programs

The Washington State Employment Security Department determines specific levels of job growth and total job openings to designate an occupation as high demand. Below are one and two year programs designated as high demand on the Olympic Peninsula.

Accounting*
 Administrative Office Systems*
 Advanced Manufacturing - CNC and Composites Technology
 Automotive Technology
 Business Administration*
 Cybersecurity and Computer Forensics*
 Early Childhood Education*
 Emergency Medical Technician

Green Building-Construction Management
 Hospitality and Ecotourism*
 Information Technology-Systems Administration*
 Medical Assisting
 Multimedia Communications - Web Design*
 Nursing
 Nursing Assistant (NAC)
 Welding

*Indicates degree can be completed from a distance

Program Details: pencol.edu/proftech

A complete listing of Spring classes can be found at classes.pencol.edu/SPRING2017

Now Accepting APPLICATIONS!

Peninsula College is now accepting applications for the following Allied Health Programs.

Discover an exciting career in healthcare with available jobs locally, regionally, and nationally!

For more information on professional / technical education, visit:

pencol.edu/proftech

Nursing

The deadline is May 1, 2017, at 9:00AM for Fall entry.
 Contact: Alana Murphy, amurphy@pencol.edu,
 or visit: pencol.edu/proftech/nursing

Medical Assisting

The deadline is June 1, 2017, at 5:00PM for the 2017 cohort. Several series of immunizations are required for program entry. Some of these series take 5-6 months to complete. Contact: Rachel Pairsh, rpairsh@pencol.edu, or visit: pencol.edu/proftech/medical-assisting



New This Spring!

Acquire the Skills to be a Construction Job Site Foreman or Contractor

Our Green Building-Carpentry program has new classes and now offers a Construction Leadership Certificate. Enroll today in one or more of the following classes.

GRBD 103: Finish Carpentry 5 credits

Class meets 8:00AM-11:30AM, TTh, Room P-9

GRBD 108: Roof Systems and Roofing 5 credits

Class meets 12:00PM-3:30PM, TTh, Room P-9

GRBD 220: Alternative Building Methods 5 credits

Class meets 10:00AM-1:30PM, WF, Room P-9

GRBD 225: Construction Management 3 credits

Class meets online.

View class details at: classes.pencol.edu/SPRING2017/GRBD

Visit the Green Building program webpage:

pencol.edu/proftech/green-building

For more information, contact Patrick Nickerson, pnickerson@pencol.edu

Earn your Information Technology - Systems Administrator Degree On Campus or Online

Enroll today and get started on your career as an Information Technology Systems Administrator.

IT 114: Data Design and Implementation 5 credits

Class meets online or 1:40PM-3:40PM, TTh, on campus

IT 156: Introduction to Operating Systems 5 credits

Class meets online.

View class details at: classes.pencol.edu/SPRING2017/IT

Visit the Information Technology-Systems Administration webpage at:

pencol.edu/proftech/information-technology

For more information, contact Eric Waterkotte, ewaterkotte@pencol.edu

Computer Applications Technology Program

Become an Expert in Microsoft Access and Excel. Classes meet online to accommodate your schedule.

CAT 119: Access Basics 1 credit

CAT 118: Excel Basics 1 credit

CAT 140: Intro to Microsoft Excel 5 credits

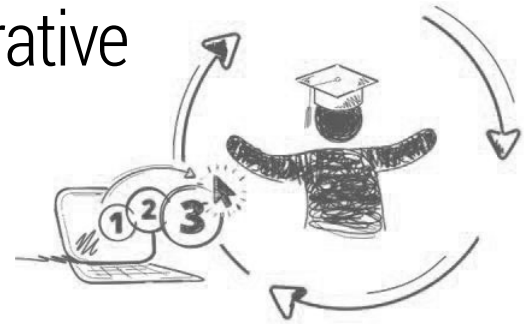
View class details at: classes.pencol.edu/SPRING2017/CAT

Visit the program webpage:

pencol.edu/proftech/computer-applications-technology

For more information, contact Tanya Knight, tknight@pencol.edu

Administrative Office Systems Program



The Program of Choices

The Administrative Office Systems (AOS) program is designed to prepare students to work in a wide variety of office settings: Accounting, Administrative Support, Computer Applications Support, Legal, and Medical.

Interactive training and skill-based assessments are completed in a virtual environment; projects are based on real-world business situations. Capstone courses offer a unique opportunity for students to review skills in a business environment. Most courses are available online. All degree options include a career success course in which students develop a self-directed, flexible plan to launch and manage their careers.

What the Program Offers You:

- Preparation for the Real World
- Free Microsoft Certification Exam in all Technology Courses
- Customized Learning Paths
- Specialized Classes (legal, medical, accounting)

Degrees:

- Accounting/Payroll Assistant (AAS and AAS-T)
- Administrative Assistant (AAS and AAS-T)
- Computer Applications Support (AAS)
- Legal Office Assistant (AAS)
- Medical Office Assistant (AAS and AAS-T)
- Eligible for Certified Medical Office Assistant Exam
- Medical Billing and Ethics courses included

Short-Term Proficiency Certificates

- Administrative Software Specialist
- Healthcare Documentation I and II
- Legal Assistant I and II
- Medical Office Coordinator
- Office Assistant I and II
- Receptionist

For more information, visit:

pencol.edu/proftech/administrative-office-systems

Can't Afford College? PC can help!

Financial support is provided to the students in the form of a grant and **does NOT have to be repaid.**

The **Worker Retraining Free Tuition Program** at Peninsula College is a state funded program designed to support instruction and training costs. It assists students interested in Adult Basic Skills and Professional-Technical programs such as Business, Nursing, Welding, and Criminal Justice with tuition expenses, books, dependent care assistance, and transportation costs, along with an educational supply or tool stipend. Additionally, funds can now be used to earn your Bachelor's degree at PC.

For more information about the Worker Retraining Free Tuition Program, contact:

Brian Kneidl, Worker Retraining Navigator at (360) 417-6263, or email bkneidl@pencol.edu, or visit: pencol.edu/worker-retraining

Advanced Manufacturing - CNC and Composites Technology

Get started today on a path to your new career as a Computer Numerical Control (CNC) operator and programmer

ADMFG 111: Introduction to CAD (Computer-Aided Design), 5 cr
Class meets MW from 5:30PM-8:00PM

ADMFG 140: Introduction to CNC, 3 cr
Class meets Tuesdays from 5:30-8:00PM 3/30/17-5/5/17

ADMFG 141: Introduction to CNC Programming, 3 cr
Class meets Tuesdays 5:30-8:00PM 5/9/17-6/15/17

If you enjoy working with your hands and want to learn how to fabricate projects, then our Composites program is for you:

COMP 100: Composites Safety, 1 cr
Class meets MWF 3:00PM-5:00PM 4/14/17-4/26/17

COMP 101: Survey of Composites, 1 cr
Class meets MWF from 3:00PM-5:00PM 3/30/17-4/12/17

COMP 113: Composites Measurement, 2 cr
Class meets MWF from 3:00PM-5:00PM 5/24/17-6/15/17

COMP 124: Composites Molding 3 cr
Class meets TTh 8:30AM-12:00PM

COMP 125: Composites Drawing, 2 cr
Class meets MWF from 3:00PM-5:00p 4/28/17-5/22/17

COMP 217: Advanced Composites Technology III, 11 cr
Prerequisites: COMP 122 or instructor permission
Class meets MTWTh from 9:00AM-12:30PM

COMP 220: Introduction to Composites Recycling, 5 cr
Class meets TTh from 5:30PM-8:00PM

View class details:
classes.pencol.edu/SPRING2017/COMP
Visit the webpage:
pencol.edu/proftech/composites-technology

For more information, contact Maitland Peet, program coordinator: mpeet@pencol.edu





NEED A FIRST AID CARD?

FA 100 Industrial First Aid 1 cr

Prepares individuals to perform basic first-aid procedures in cases of emergencies. Learn how to prevent accidents in the home and on the job. Adult CPR. Provides two-year certification. Class tuition: \$98.75. No refund after class meets. Class meets American Heart Association BLS for Healthcare Providers (CPR and AED) Program.

3070 PU 9:00AM-6:00PM Sa Location: M125
Class meets 4/22/17 | Bowes M, mbowes@pencol.edu

3080 PU2 9:00AM-6:00PM Sa Location: M125
Class meets 5/20/17 | Bowes M, mbowes@pencol.edu

FA 105 Basic Industrial First Aid 1 cr

Prepares students to perform basic first-aid procedures in cases of emergencies. Learn how to prevent accidents in the home and on the job. Adult and infant CPR. Provides three-year certification. Class tuition: \$98.75 No refund after class meets. Class meets American Heart Association BLS for Healthcare Providers (CPR and AED) Program.

3100 PU 9:00AM-5:00PM SaSU Location: M238
Class meets 6/10/17 and 6/11/17 | Sundin E, esundin@pencol.edu

FA 180 First Aid for Healthcare Providers 1 cr

Prepares individuals to perform basic first-aid procedures in cases of emergencies. Learn how to prevent accidents in the home and on the job. Adult CPR. Provides two-year certification. Class tuition: \$98.75. No refund after class meets. Class meets American Heart Association BLS for Healthcare Providers (CPR and AED) Program.

3120 PU1 9:00AM-6:00PM Sa M238
Class meets 4/8/17 | Moroz D, dmoroz@pencol.edu

3130 PU2 9:00AM-6:00PM Sa M238
Class meets 5/13/17 | Moroz D, dmoroz@pencol.edu



Susan Lemay
Adult Basic Education

FACULTY HIGHLIGHT

I decided to be a teacher when I was very young, a goal I am glad I kept because teaching has been a lifelong passion. After getting a BS degree in Elementary Education, my first job out of college was teaching Adult Basic Education (ABE). While getting an MA degree in Environmental Education, I took the first class in teaching ABE that San Francisco State offered. I worked for a non-profit tutoring agency, filled a backpack with books, and rode the bus to students from diverse cultural and socio-economic backgrounds, which included ESL and GED students. When I moved up here, I was offered a GED class in Port Townsend that "might run once a year" and took it.

Since then, with help from an initial partnering with other agencies, I have taught at Peninsula College just about every quarter. This has included ABE, GED, ESL, special life skills and employability classes, parenting classes, and most recently, HS21+, which awards high school credit and a diploma to anyone over the age of 21. This program has helped so many students find employment, speak English, transition to college classes, gain self-confidence and the skills to empower themselves, or improve their ability to help their children succeed in school. I know that I am contributing to a better world when former students give me a hug and express their gratitude years later.

I love working in my own community. Port Townsend is a wonderful place to live and work, and the local staff and faculty are very supportive. I enjoy teaching in our newly renovated building with state-of-the-art technology. The technological skills students learn in my class are essential for success in higher education and the workplace.

At the end of each day, it's really about interacting with students and seeing them succeed.

Business Administration Program

Earn your Business Administration Degree On campus or Online. Enroll today and jump start your future in becoming a successful part of the business world with a degree in Business Administration. Previous graduates have found employment in education, government, private industry, and self-employment in a wide variety of career paths related to business, accounting, and management. For more information, contact Jill Snyder, Program Coordinator: jsnyder@pencol.edu or visit: pencol.edu/proftech/business-administration

BUS& 101: Introduction to Business 5 cr

Class meets online or 1:30PM-3:40PM, TTh, Room M233

BUS 205: Principles of Management 5 cr

Class meets online or 10:20AM-11:20AM, TWTHF

BUS 250: Operations Management 5 cr

Class meets 11:30AM-12:30PM, TWThF, Room M233,
Prerequisite: BUS&101

BUS 270: Management Information Systems 5 cr

Class meets online.

BUS 280: Managerial Finance 5 cr

Class meets online.

View class details at:

classes.pencol.edu/SPRING2017/BUS

Hospitality & Ecotourism

Enjoy People & the Outdoors?

Hospitality is one of the highest demand job fields in Clallam and Jefferson Counties. Enroll today and advance your career with flexible online classes developed by local employers.

HOSP 130 Hospitality and Tourism Marketing

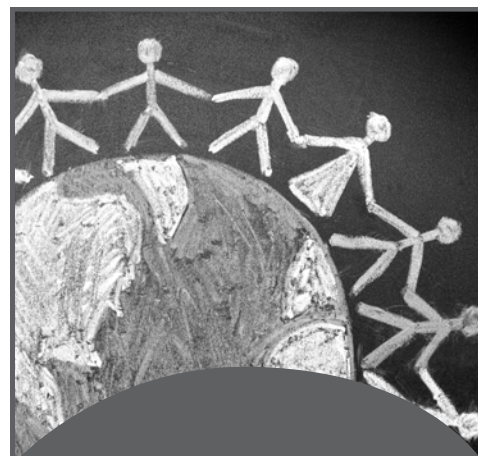
HOSP 140 Dining Room Management

HOSP 150 Sustainable Tourism

HOSP 215 Adventure Travel Leadership and Guiding

All Hospitality classes meet online. For more information, contact instructor
Lori Nixon, lnixon@pencol.edu

pencol.edu/proftech/hospitality-and-ecotourism



COMMUNITY EDUCATION CLASSES

Peninsula College also offers an array of non-credit classes! Look for the Community Education guide coming soon, or visit pencol.edu/ce to find out more!

Discover your Creative Side!

Learn valuable digital media skills from working artists and web designers.

Media 110: Intro to Multimedia Graphic 5 cr

Class meets online or 9:10am-11:00am, WF
Instructor Marina Shipova, mshipova@pencol.edu

Media 145: Directing and Production 5 cr

Class meets 1:40pm-3:30pm, TTh
Instructor Renne Emiko Brock, rbrock@pencol.edu

Media 155: E-Book Design and Publishing 5 cr

Class meets online or 1:40pm-3:30pm, WF
Instructor Marina Shipova, mshipova@pencol.edu

Media 187: Mobile Application Development 5 cr

Class meets online
Instructor Nick Merrigan, nmerrigan@pencol.edu

Media 192: Web Content Management 5 cr

Class meets online
Instructors Renne Emiko Brock, rbrock@pencol.edu or
Nick Merrigan, nmerrigan@pencol.edu

Media 206: Database Driven Websites, 5 cr

Class meets online
Instructor Eric Waterkotte, ewaterkotte@pencol.edu

Media 203: Advanced Digital Photography, 5 cr

Class meets online
Instructor Marina Shipova, mshipova@pencol.edu

Media 212: Graphic Design Portfolio, 5 cr

Class meets online or 11:30am-1:20pm, WF
Instructor Marina Shipova, mshipova@pencol.edu

Media 215: Advanced Digital Video, 5 cr

Class meets online
Instructor Renne Emiko Brock, rbrock@pencol.edu

Media 224: Immersive Engagement, 5 cr

Class meets online
Instructor Renne Emiko Brock, rbrock@pencol.edu

Arts & Sciences

To register, visit: pencol.edu/register

Courses listed here are just a preview of the many courses in our Spring schedule. A complete listing of classes can be found at:

classes.pencol.edu/Spring2017

ART 109: Intro to Printmaking

Item 1320, section AU | TTh 1:40PM to 3:50PM | 5 cr
Instructor: Michael Mills

Carve an image into a block of wood and enjoy the unique result when printed. Learn to etch a drawing into a copper plate and to create an edition of hand pulled prints from that plate. Learn to operate a printmaking press. Something magical happens when you draw an image onto one surface and print it onto another. The results are surprising and unique. Lectures designed to enhance your studio experience and broaden your understanding of printmaking forms will discuss the history of printmaking alongside prints produced by Rembrandt, Warhol, Picasso, and others. Counts as Humanities distribution.

ART 224 / 225 / 226 Ceramics

Item 1360/1375/1400, section PU | TTh 10:20AM to 12:20PM | 5 cr | Instructor: Steve Belz

Item 1350/1370/1390, section AU | TTh 1:30AM to 3:30PM | 5 cr | Instructor: Steve Belz

To ceramic materials and creative processes (ART 224), practices an introduction to using the potter's wheel (ART 225), and intermediate studio work, focusing on art theory, processes, and personal expression (ART 226). Students create a series or projects utilizing a variety of traditional and innovative techniques and processes. Prerequisite for ART 226: ART 224 or 225 or permission of the instructor.

CHEM& 131L: Intro to Organic/Biochemistry

Item 2020, section AU | WF 11:30AM to 1:30PM | Th 1:30AM to 4:50PM | 6 cr Instructor: Ben Weintraub

Are you focusing on the Allied Health Fields or getting your Associate in Science degree? If you are, Introduction to Organic and Biological Chemistry is for you. Intended for non-science majors, the emphasis is on functional groups, reaction synthesis and biochemical applications. Prerequisite: Eligibility for ENGL& 101; Math 098/099 or higher; 2.0 or higher in high school chemistry or CHEM& 121; or permission of instructor.

ENGL& 102: Composition II

Item 2800, section DU | TWThF 11:30AM to 12:30PM
5 cr | Instructor: Matt Teorey

MATH& 107: Math in Society

Item 4150, section AU | TWThF 10:20AM to 11:20PM
5 cr | Instructor: Zach Rutledge

Literature and Mathematics: Intertwined stories unfolding over two millennia.

Consider how planet-eating black holes connect to the stream of conscious writing of authors such as William Faulkner. Consider imaginary numbers as a form of nonsense poetry, like "The Jabberwocky." Consider that the infamous quadratic formula was developed in the same place as the fabulous stories of Aladdin and Sindbad the sailor.

Spring quarter will provide these and other interesting connections through the combined classes Math 107 and English 102. Earn credit for both classes (10 credits total) by exploring big ideas in the development of mathematics and literature along with a community of learners, including Prof. Zac Rutledge and Prof. Matt Teorey. This learning community will not have endless math problems to drill or grammar lessons. Students will engage in dynamic conversations about ideas and multiple fun activities outside the classroom.

Math 107 and English 102 is a linked course. Enrollment in both courses is required. ENGL& 102 Prerequisite: 2.0 or better in ENGL& 101. MATH 107 Prerequisite: P (2.0 or higher) in Math 090/091 or equivalent.

ENGL& 220: Introduction to Shakespeare

Item 2840, section AU | TWThF 10:20AM to 11:20PM
5 cr | Instructor: Janet Lucas

Did you know Shakespeare's worlds include lovers, liars, mistaken identities, jealousy, prejudice, and mysterious places and people? Join Professor Janet Lucas on a trip back to Elizabethan England and beyond to explore gender and sexuality in five great Shakespearean plays and some of the films they inspired. Our plays spring quarter will include The Merchant of Venice, Hamlet, Taming of the Shrew, Othello, and The Tempest. On our journey, we will meet interesting characters, experience their tragic and comedic storylines, and understand cultural expectations of gender and sexuality as expressed through these plays, all the while unraveling the mysteries of Elizabethan English. This will be an active class with discussions, staged readings, film watching, writing assignments, and fun, creative projects. Prerequisite: ENGL& 101 or permission of instructor.

ENGL& 244: American Literature I

Item 2850, section AU | TWThF 9:10AM to 10:10PM
5 cr | Instructor: Matt Teorey

A survey of poetry by American authors from the Puritans to the present. We will read and discuss the "big name" poets like Robert Frost and Emily Dickinson, as well as popular song writers, such as Billie Holiday, Bob Dylan, and Paul Simon. Students will choose some of the poems and song lyrics we discuss. Prerequisite: ENGL& 101 or permission of instructor.

GEOL& 101L: Intro to Physical Geology

Item 3270, section AU | TThF 1:30PM to 2:30PM
W 1:30PM to 4:50PM | 5 cr | Instructor: Dann May

Introduction to geology for those intending to major in geology, geophysics, or related earth sciences. Tectonics, volcanism, earthquakes, introductory concepts of mineralogy and petrology, and survey of processes that shape the surface of the earth, including water, wind, ice, and gravity. Three hours' lecture, three hours' laboratory per week. This course will include field trips to local sites of geologic interest. Prerequisite: Eligibility for both ENGL& 101 and MATH 090; CHEM& 110L or equivalent recommended.

IS 201: Service Learning

Item 3815, section COL | Online | 1-5 cr | Instructor: Jen Santry

Make a difference and experience service learning at Peninsula College! Service Learning provides Peninsula College students the opportunity to gain hands-on experience in their academic area of interest by directly working with nonprofit partners in our community. In this class, you will apply online learning and meaningful reflection to current social issues, environmental concerns and community needs. Prerequisite: ENGL& 101.

MUSC 146/147/148: Vocal Ensemble

Item 4570/4580/4590, section AU | TTh 10:20AM to 12:30PM | 2 cr | Instructor: Elaine Gardner-Morales

Calling All Jazz Singers! Learn to sing vocal Jazz. Sign up for Peninsula College Vocal Ensemble! Prerequisite: Permission of instructor.

GET FIT While Earning Credits Towards Your Degree!



At Peninsula College we care about the health and wellness of our students, which is why we offer health and fitness classes to maximize your health and fitness goals. Get your heart pumping with cardio and strength-training machines, and weight stations where you can sweat away life's daily stressors. Enroll today and discover good fitness habits that will lead to a better and healthier you!

View classes at: classes.pencol.edu/SPRING2017



Brian Hague

Arts & Sciences

FACULTY HIGHLIGHT

I grew up in South Dakota and graduated from Stanley County High School in Ft. Pierre. I earned BS and MS degrees from South Dakota State University and a PhD from Auburn University. While at Auburn, I served as a full-time Instructor for the Department of Zoology and Wildlife Sciences. After that, I was an Associate Professor at Penn State Hazleton for six years. I came to Peninsula College in 2004 as Professor of Biology and I am also Adjunct Faculty for the WWU Huxley on the Peninsulas program.

My current research program looks at population dynamics of freshwater turtles. I regularly take students on research trips – we have a trip planned for spring break this year and I am taking six PC students and three WWU students to Florida. My research team, the North American Freshwater Research Group of the Turtle Survival Alliance, has research sites in Florida, Texas, Tennessee, Pennsylvania, and Costa Rica. We have been working at some of our sites since 1999. Look us up on Facebook and at turtlesurvival.org!

The students at PC are amazing! They get started here and then excel when they transfer to four-year schools. I have former students working in a wide variety of jobs across the country. I love hearing from them about their successes.

I really like the small school atmosphere at PC. At one time, at Auburn University, I was teaching two sections of Biology (200+ in one section, 70 in the other) and one section of Physiology (135 students). I had a terrible time getting to know them. I want to be on a first-name basis with each of my students. I also appreciate the diversity in age, life experience, and culture at PC.

Our students are as talented as I have experienced anywhere, the faculty are innovative and committed to excellence, the administration is forward-thinking, and the PC Foundation is the most supportive organization I have ever worked with. Go Pirates!

For a complete listing of
Spring classes, visit:

classes.pencol.edu/SPRING2017

PC at Forks

MATH 107: Math in Society

Item K340, section QUO | MTWTh 4:00PM to 5:00PM
5 cr | Instructor: Mikale Nowak

Learn how you can apply mathematics to practical situations in PC's Math in Society class! Like how to use mathematical models as tools for solving problems in the world, or using probability for making informed decisions. This class meets the Quantitative Skills requirement for all AA and AAS degrees. It's offered just one time each year at the Forks campus, so sign up today! Prerequisite: P (2.0 or higher) in Math 090/091 or equivalent.

IS 103: *Crosscurrents* - Women's Voices in the 20th Century

Item K300, section QUO | TTh 12:00PM to 1:00PM
5 cr | Instructor: Glynda Schaad

Catch a glimpse into the poetry and style of 20th Century's intrepid women in IS 103: Women's Voices in the 20th Century. Learn about renowned authors such as Anne Sexton, Willa Cather, Eudora Welty, Flannery O'Connor, and Grace Paley. Students will also be introduced to the talents of lesser known early 20th Century North Olympic Peninsula artists such as published poet May McLeod Pitt and photographer, Fanny Taylor.

PC at Port Townsend

MUSC 110: History of Rock N Roll

Item T370, section JU | MW 2:00PM to 4:00PM
5 cr | Instructor: Elaine Gardner-Morales

Discover the history of rock 'n' roll in more detail than you can imagine. In this class you'll look at the cultural/sociological history of pop music in the USA and how it changed social history by combating racism, conformity, generational conflict, governmental repression and censorship.

ENGL& 236: Creative Writing I

Item T250, section JUO | Th 6:00PM to 8:30PM with an online component | 5 cr | Instructor: Holly Hughes

Have you been waiting for the incentive of a class to put your creative ideas on paper? In this 5 credit* creative writing class, we'll explore poetry, fiction/story, and several forms of nonfiction that focus on the theme of place: the rich cultural and natural history of Port Townsend. This hybrid class will include reading, writing, online discussions, workshops and field trips. You can expect lively, relevant writing assignments, helpful feedback on your writing, and a deeper understanding of the cultural and natural history of your home ground. Prerequisite: ENGL& 101 or permission of instructor.

*Also available as a 1-2 credit class with adjusted assignments.

Associate of Arts Degree

Earn more and save more at PC!

ADULTS OVER

25

WITH A 2 YEAR DEGREE
EARN ON AVERAGE

18%

MORE THAN THOSE WITH A
HIGH SCHOOL DIPLOMA

AND WITH A 4 YEAR DEGREE

68%

MORE THAN THOSE WITH A
HIGH SCHOOL DIPLOMA!

Why should you get an Associate of Arts Degree at Peninsula College? Because it's a bargain that could improve your life!

At Peninsula College you can earn a two-year degree by attending face-to-face classes or online to accommodate your schedule. For more information, email us at:

info@pencol.edu

SOC SI 101: Contemporary Global Issues

Item T340, section JUO | T 3:00PM to 5:30PM with an online component | 5 cr | Instructor: Dan Stengel

The United States had the luxury of ignoring the rest of the world during the 19th century. In the 20th century, American influence helped shape the global system. Now in the 21st century, many Americans face the challenge of living in a world we helped create without the contextual background to understand how it got that way and how to maintain ourselves within it. This course examines the economic, political and cultural dimensions of the current global system with an eye toward understanding its dynamics and our role in it.

Honors Program



A one of a kind Honors Program at PC

The Peninsula College Honors Program brings together students motivated to achieve academic success. Honors students at Peninsula College say the program is exciting, allows them to pursue their education in classes made up of similarly motivated students, helps them identify and complete a project they are passionate about, and move forward to better pursue their life goals.

For more information, visit: pencol.edu/honors-program

STUDY ABROAD

and earn college credit!

Costa Rica: Summer 2017

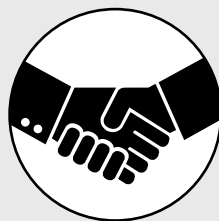
Spain: Fall 2017

Japan: Fall 2017

Financial aid and scholarships available



For more information, contact:
vconroy@pencol.edu



Get Hired!

HUMAN DEVELOPMENT CLASSES

Get the skills necessary to find the job you want, stand out to employers, and be an effective collaborator at work. Online and face to face classes are offered.

HUMDV 112: Occupation Exploration 1-2 credits

Discover how your strengths, skills, values and interests can help you make decisions in exploring college majors and career paths. Class meets online.

HUMDV 114: Resume Writing 1-2 credits

Class meets online.

HUMDV 115: Interview Skills 1-2 credits

Build your resume and increase your skills in interviewing. Class meets online.

HUMDV 120: Human Relations 3 credits

Learn how to communicate, problem solve, and be an effective leader by taking a human relations course. Class meets 11:30AM-12:30PM or 1:30PM-2:30PM, TWTh. Both sections include an online component.



Tara Martin Lopez
Arts & Sciences / BAS Program

FACULTY HIGHLIGHT

I am from Albuquerque, New Mexico. I graduated Summa Cum Laude in History and Spanish from the University of New Mexico, and my Ph.D. in Sociology is from the University of Manchester, UK.

Although two different disciplines, both history and sociology allowed me to make sense of the world. Similar to a jigsaw puzzle, both disciplines provided ways to connect disparate facts into an intelligible and meaningful narrative. In particular, I was inspired by the ways that I saw people's collective efforts to improve life in the past could have profound effects on the well being of people today.

I have recently published a book titled *The Winter of Discontent: Myth, Memory, and History* that charts the collective efforts of ordinary people, especially women, to create political change in Britain in the 1970s and 1980s.

One of the most significant achievements I have observed from one particular student represents the broader spectrum of students I teach. Zak Hoskins was an exceptional student in my "Introduction to Sociology" class, so I suggested that he enroll in PC's Honors Program.

He worked with me to complete his Honors project on prisoner re-entry in Clallam County. The poise, confidence, and intellectual acumen he displayed during the presentation of his findings represented the best of what I am lucky enough to witness with a variety of students every day at PC.

While working and raising my sister and me, my mom would attend the local community college in Albuquerque, New Mexico. Despite struggling financially, it was when my mother was attending school that she felt the most challenged intellectually and valued and respected socially.

I wanted to contribute to that broader goal of serving smart and hardworking people like my mother. It is her experience that inspired me to teach at two year colleges.

Every day students ask me smart and challenging questions that have me dig deeper into my field and make me think about my discipline and the world around me in exciting, new ways.

For a complete listing of
Spring classes, visit:

classes.pencol.edu/SPRING2017

SCHOLARSHIPS AVAILABLE NOW!

For more program information, visit: pencol.edu/scholarships

Webster Scholarship:

Award Amount: Up to \$4,500 for an academic year, and must be enrolled in at least 5 credits to be eligible for the scholarship.

Grade point average requirement: Maintain a 2.0 cumulative grade point average at Peninsula College, and a combined 3.0 in their communication studies and multimedia communication courses.

Enrollment requirement: Students must enroll in either of the following classes: Communication Studies or Multimedia Communication.

To apply, go to www.theWashBoard.org and search for Webster. For more information contact PC's Financial Aid Office at (360) 417-6390.

Clallam Promise Scholarship:

Students planning to attend Peninsula College in the 2017-18 academic year can apply now for scholarships. Available scholarships, covering a wide range of study, can be viewed and accessed by entering "Peninsula College" in the search bar at www.thewashboard.org. Additional scholarships are added as funds become available, so applicants are encouraged to check back periodically. The deadline for applying for most scholarships is April 18, 2017.

Visit pencol.edu/clallam-promise-scholarship for more information.

BACHELOR OF APPLIED SCIENCE



Graduating at the end of spring quarter *or* already have a 2-year degree?

Do you have a two-year degree and want to continue your education? Are you interested in a career in management?

Do you want to get a four-year degree right here on the Olympic Peninsula? If so, Peninsula College's Bachelor of Applied Science in Applied Management (BAS) program is for you! Our courses are designed to develop your leadership, business, and organizational skills. Classes are offered in the evening or online for your convenience.

To find out more, check out our program information online at pencol.edu/bas or contact us at bas@pencol.edu

Apply for Financial Aid

Applying for financial aid is a PROCESS - not a single step. It is also about dates and deadlines. To start the process, visit www.pencol.edu/Financial/Apply-for-aid.

You will need to:

- Complete the FAFSA and list PC as your college.
- Login to the Student Financial Aid Portal: www.pencol.edu/financial/student-financial-aid-portal
- Complete PC's Financial Aid Data Sheet.

Deadlines:

What quarter do you want to start?	Apply to PC Before:	Complete Financial Aid File No Later Than:
Spring 2017	January 2017*	February 17, 2017
Summer 2017	May 2017	May 2, 2017

* Deadline Passed

Submit Your FAFSA

The Free Application for Student Aid (FAFSA) process is open now. File as early as possible for maximum benefits every year!

- Create your Federal Student Aid ID: <https://fsaid.ed.gov>
Go to www.fafsa.ed.gov and fill out the FREE application.

- Look for your Student Aid Report in the mail/email. Call 1.800.4.FEDAID if you need it resent.

The FAFSA opens in October for the next academic year. Submit it early, then add information as it becomes available. Visit pencol.edu/financial for more information.

Financial Aid Follow-Up

- Check application status at the Financial Aid Portal: <https://www.fas.ctc.edu/portal4/?col=220>
- Complete the PC Financial Aid Data Sheet online: Log into the Financial Aid Portal and a link will be available under "Information We Need From You."
- Respond to any other requests, all listed in the Financial Aid Portal under "Information We Need From You."

Worker Retraining Free Tuition Program

Worker retraining opportunities are provided for laid off, unemployed, and dislocated workers in the State of Washington.

- Provides job training to eligible members of Washington's workforce.
- The financial support provided to eligible students does NOT have to be repaid.

For more information visit: pencol.edu/worker-retraining

Scholarships

Scholarships are available throughout the year for virtually all types of students. Please visit pencol.edu/scholarships to learn about scholarships available as well as to learn about the Wash Board, a web based centralized scholarship matching clearinghouse.

No Diploma or GED?

Not sure if you qualify for federal or state financial aid due to not having a High School Diploma or GED? Talk to Peninsula College about what program you're interested in and we can assist in navigating the steps to see if you will qualify.

2016–2017 Tuition & Fees

Credits	Resident	Nonresident	Resident Baccalaureate	Nonresident Baccalaureate
1	\$128.91	\$142.34	\$226.94	\$240.37
2	\$241.82	\$268.68	\$437.88	\$464.74
3	\$354.73	\$395.02	\$648.82	\$689.11
4	\$467.64	\$521.36	\$859.76	\$913.48
5	\$580.55	\$647.70	\$1,070.70	\$1,137.85
6	\$693.46	\$774.04	\$1,281.64	\$1,362.22
7	\$806.37	\$900.38	\$1,492.58	\$1,586.59
8	\$919.28	\$1,026.72	\$1,703.52	\$1,810.96
9	\$1,032.19	\$1,153.06	\$1,914.46	\$2,035.33
10	\$1,145.10	\$1,279.40	\$2,125.40	\$2,259.70
11	\$1,206.06	\$1,341.07	\$2,145.41	\$2,280.42
12	\$1,267.02	\$1,402.74	\$2,165.42	\$2,301.14
13	\$1,327.98	\$1,464.41	\$2,185.43	\$2,321.86
14	\$1,388.94	\$1,526.08	\$2,205.44	\$2,342.58
15	\$1,449.90	\$1,587.75	\$2,225.45	\$2,363.30

* Tuition includes wellness fee, transportation fee and technology fee. Additional fees may apply.

* Tuition rates are for U.S. Citizens, WA State Residents or Nonresidents.

Opportunity Pathways

Through Opportunity Pathways, Washington State provides a variety of financial aid programs to help students and their families pay for college. For more information regarding state support visit:

www.sbctc.edu/resources/documents/colleges-staff/programs-services/student-services/2016-17-state-support-letter.pdf

This information is provided by the Washington Student Achievement Council (WASAC) as required by RCW 288.10.044.

Basic Education
pencol.edu/BasicEducation

PC's Basic Education for Adults (BEA) Program provides instruction for adults who wish to improve reading, writing, math, computer and English language skills. We also help prepare students wishing to earn their GED® or high school diploma.

Programs include:

- ESL/ELA
(English as a Second Language/English Language Acquisition)
- GED Preparation
- High School 21+
- I-BEST



PENINSULA COLLEGE

1502 East Lauridsen Boulevard
Port Angeles, Washington 98362

(360) 452-9277
www.pencol.edu

NON PROFIT ORG.
U.S. POSTAGE
PAID
WENATCHEE, WA
PERMIT NO. 241

ECRWSS

Residential Postal Customer

What's YOUR Track?

Planning to Transfer?

www.pencol.edu/transfer

Basic Education for Adults?

www.pencol.edu/programs/adult-basic-skills

Family Life Education?

www.pencol.edu/fle

Running Start?

www.pencol.edu/running-start

Bachelor of Applied Science?

www.pencol.edu/bas

Career Training Programs?

www.pencol.edu/proftech

Community & Business Education?

www.pencol.edu/ce

To view our Spring classes, visit:

classes.pencol.edu



DISCOVER

PC

Do you qualify for a FREE EDUCATION?

Worker Retraining funds now available, see page 7 for details.

For information, visit:

pencol.edu/worker-retraining